

# Lease Report

# P 51/3399

→ Complete Prospecting

## Location Details

1:100 000 Map Sheet – BRYAH 2646

1:250 000 Map Sheet- PEAK HILL SG50-08

Lease is located 80km Northeast of Meekatharra

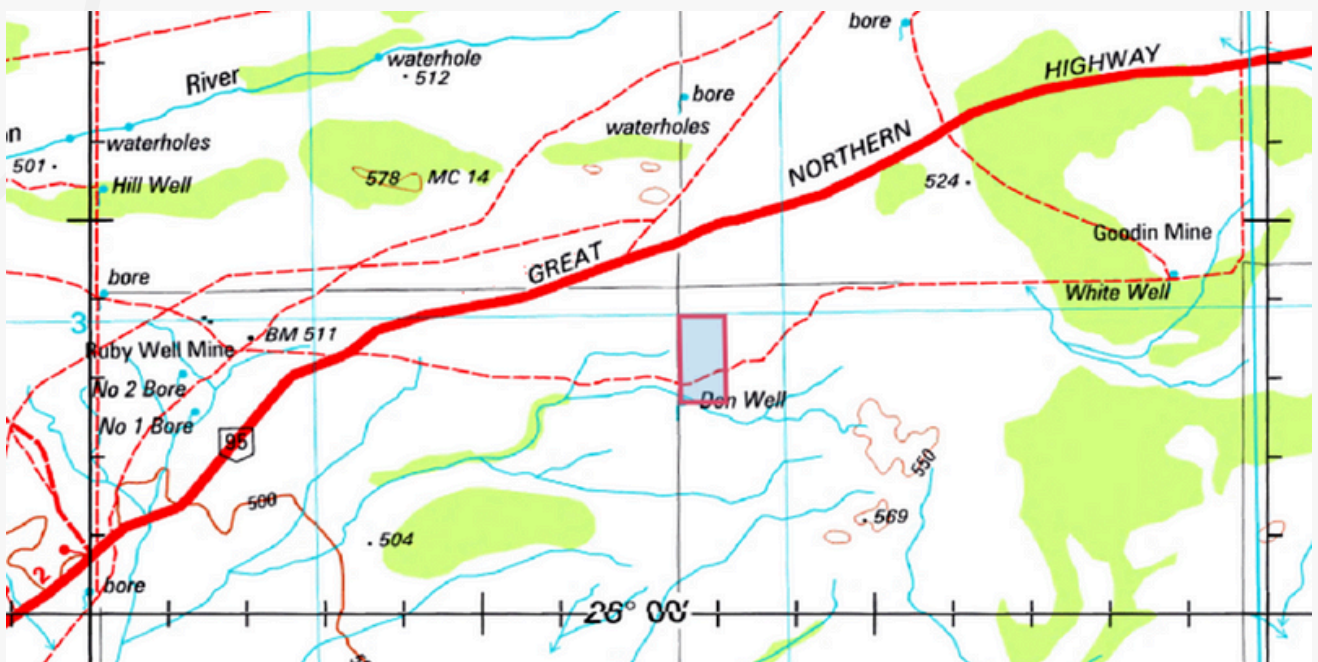
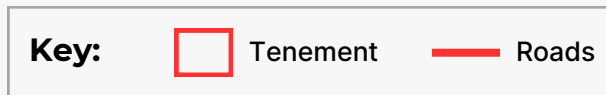
Latitude 25.95278/ Longitude 118.89171

Easting 689422/ Northing 7128221 MGA 94 Zone 50





**Figure 1** - The Location of the tenement in relation to Meekatharra



**Figure 2** - Local Infrastructure and Roads to the Tenement

## Overview

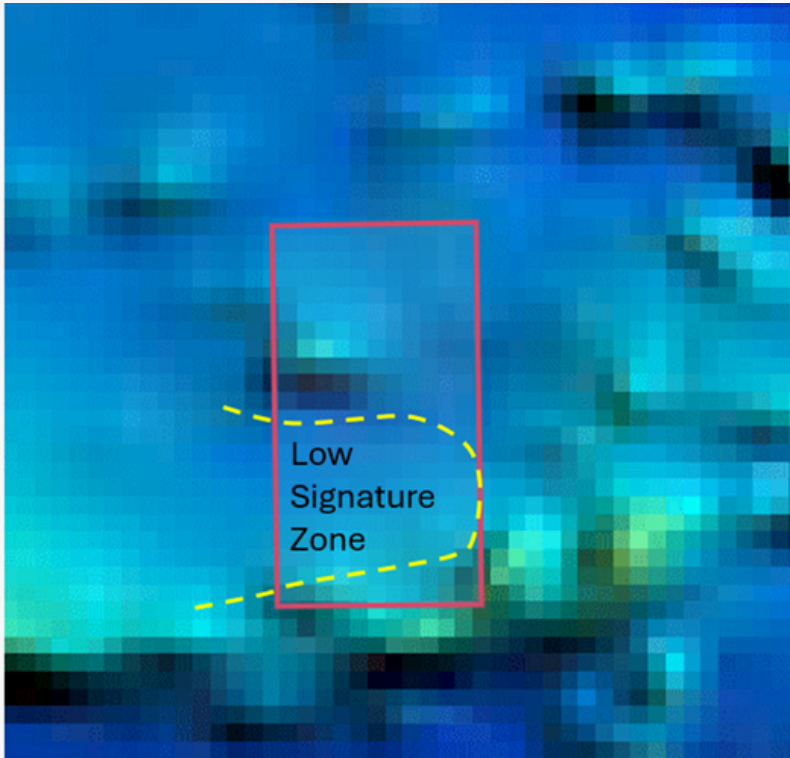
Tenement P 51/3399 has confirmed mineralisation associated with small quartz vein systems located in the southern half of the tenement. The prior Ruby Gem mine produced 6oz of gold in 1914 at a grade near 1 Oz/tonne. This mining has only be followed up by AC drilling lines, with one hole intersecting grades at only 5m depth to the north of prior workings.

This tenement has a relatively simple type of gold mineralisation, which makes it suitable for visual identification. The systems appear to be short in nature but at least two separate systems of mineralisation (Ruby Gem and Drillhole) exist with others possible.



# Magnetic Geophysics Mapping and Overview

Magnetic and Gravity surveys have been collected throughout WA by the Geological Survey. The areas of elevated Iron and Magnetite appear on these maps as red in colour and are referred to as “Magnetic Highs”, with surrounding regions appearing as Blue in colour.

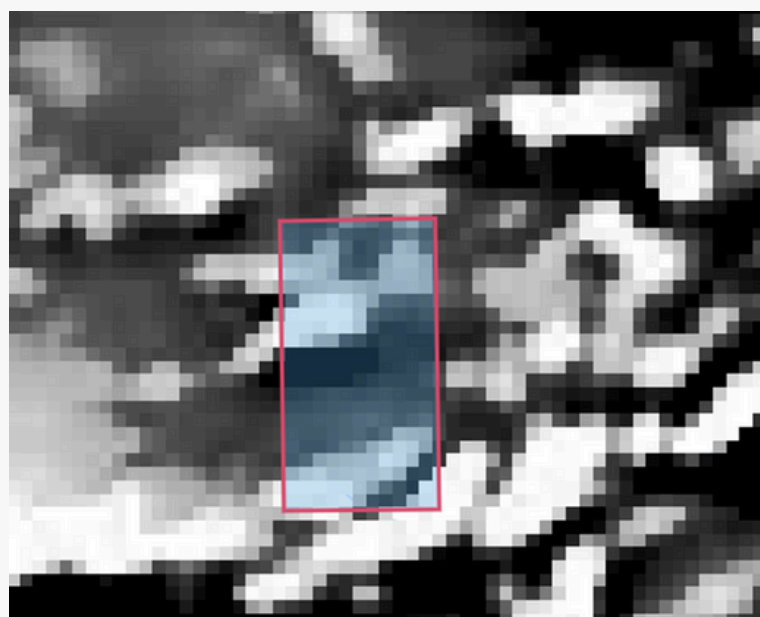


The tenement shows a magnetic low located in the location of the Basalt, an indication of the correct placement of this geological terrain with the Sedimentary Sandstone units primarily carrying a higher magnetite/iron level regionally.

A band of contact between the two regional sandstones, likely a basin wide contact zone is located in the extreme southern part of the tenement.

**Figure 5** - Normalised Magnetic Mapping with geological interpretations

First Variable Derivative (1VD) mapping provides little extra resolution due to the complex contact region of the tenement, however broadly confirms the magnetic mapping location of the basalt units. This mapping allow suggests a tensional shear fabric of the region being in a northeast-southwest orientation as seen by units below.



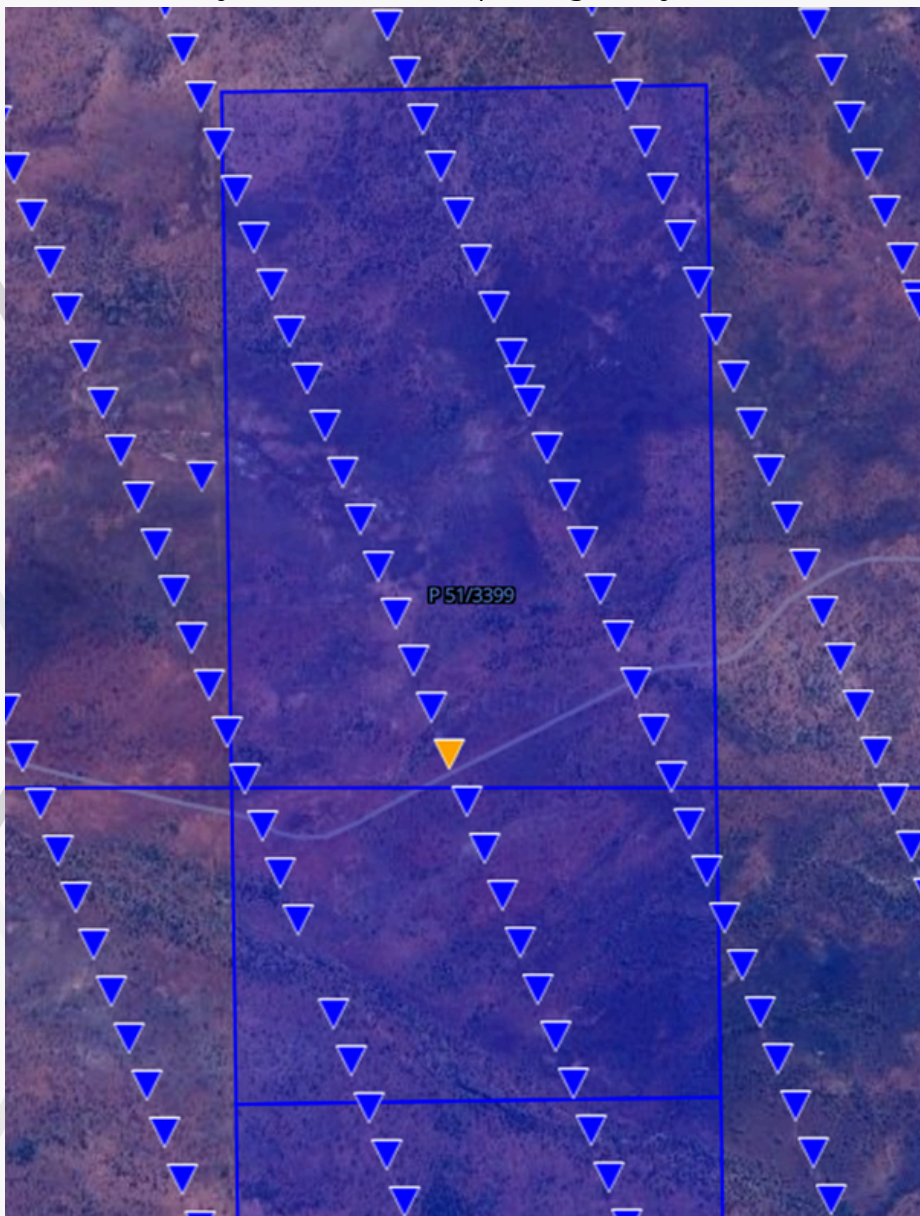
**Figure 6** - 1VD Magnetic Mapping

# Historic Drilling and Soil Sampling





The tenement has both soils and AC drilling conducted across it. Soils data is somewhat sporadic with no standout results greater than background gold grades known in the region. Despite this a known mining operation exists within the tenement and this has had a line of successful AC drilling conducted.

AC drilling is in the form of extensive AC drill lines noting the requirements in the region for deeper exploration then facilitated by auger soil samples. This drilling was successful in hitting a 0.12g/t anomaly only 5m downhole in a hole directly north of the prior known mining area. This signifies that mineralisation is confirmed to be present locally, with the drill spacing likely to wide to confirm the actual

location and extent of it. A-Typically in exploration these hits would be reviewed for follow up closer spaced drilling to understand this zone.



**Figure 7** - AC Drilling results showing best AU in hole at ppm (g/t)

Colour	Range
	2.5 To 9999
	1 To 2.49
	0.1 To 0.99
	0 To 0.09

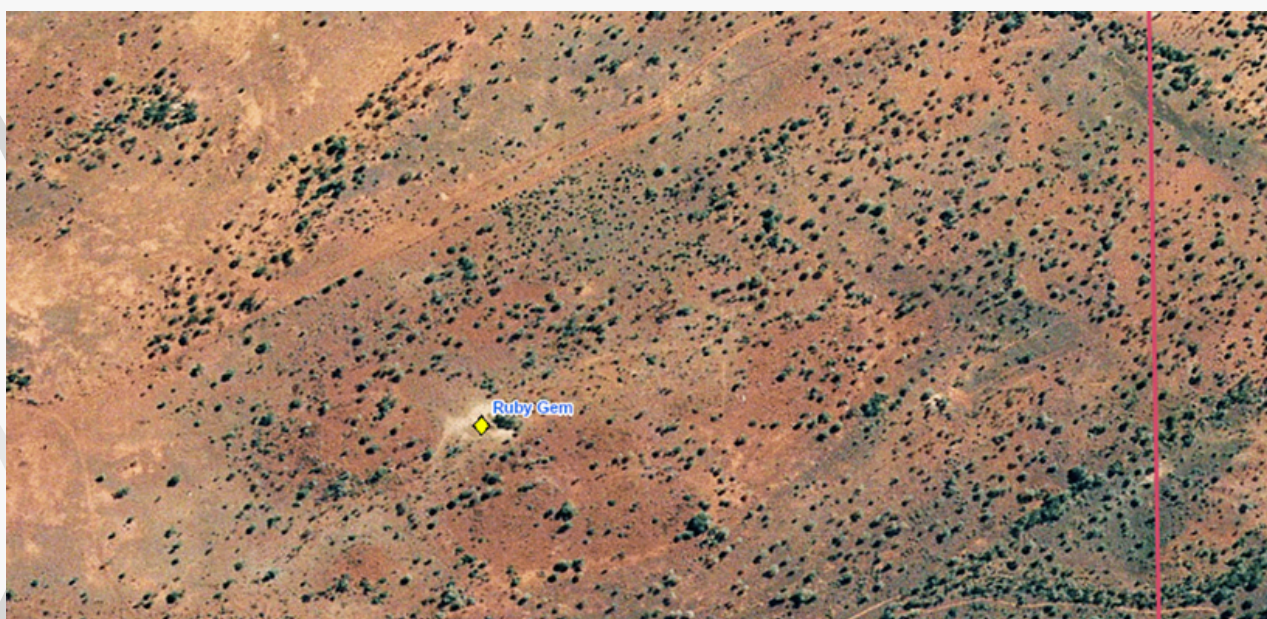
## Prior Mining Operations

The Ruby Gem mining operation is listed to of been operation in 1914 producing a total of 6oz of gold with a grade of processed material reaching 26g/t. This low production high grade indicates a small extent, but high grading systems confirmed to be present on the lease and indicated to exist in more then one limited zone as seen by the drilling.

Mineralisation is listed as being in a quartz vein, which is commonplace for this style of mineralisation and also relatively visual to identify.

Start Date	End Date	Production Period	Product	Quantity	Grade
01 January 1914	31 December 1914	Cumulative	Gold ore	0.007 kilotonne	26.857 gram/tonne

**Figure 8** - Production of Rudy Gem during operations in 1914



**Figure 9** - Rudy Gem from Satellite imagery

## Gold Prospectivity and Future Work

The tenement has had wide spaced exploration only, and a confirmed geological style hosting gold mineralisation. Future focus of gold exploration and prospecting would be best to focus on the southern portions of the lease where the basalt in the host rock. Zones of white and white bleaching (as can be seen in the satellite imagery) would be good zones to focus on with the system likely presenting itself as a number of short lived, mineralised quartz vein streaks.



**Figure 10** - Ruby Gem workings

## Executive Summary

The tenement P 51/3399 has some interesting geological targets, which are suitable for prospectors and small scale workers to follow up. Gold targeting is relatively simple with quartz hydrothermal systems being the identified mineralisation host at this stage.

Prior mining indicate the potential for high grade systems to be present in the region, despite their short mineralisation extent.

This report was completed for  
*Complete Prospecting by Golden Strike.*

### Reporting Geologist -

Lachlan Kenna  
BscGeology (Hons),  
MAUSIMM



All information in the above report is general in nature, and produced with publicly available data on the mentioned tenement and area..

Golden Strike Pty Ltd advises any party conduct their own research prior to any investment decisions.

# Lease Report

# P 51/3400

→ Complete Prospecting

## Location Details

1:100 000 Map Sheet – BRYAH 2646

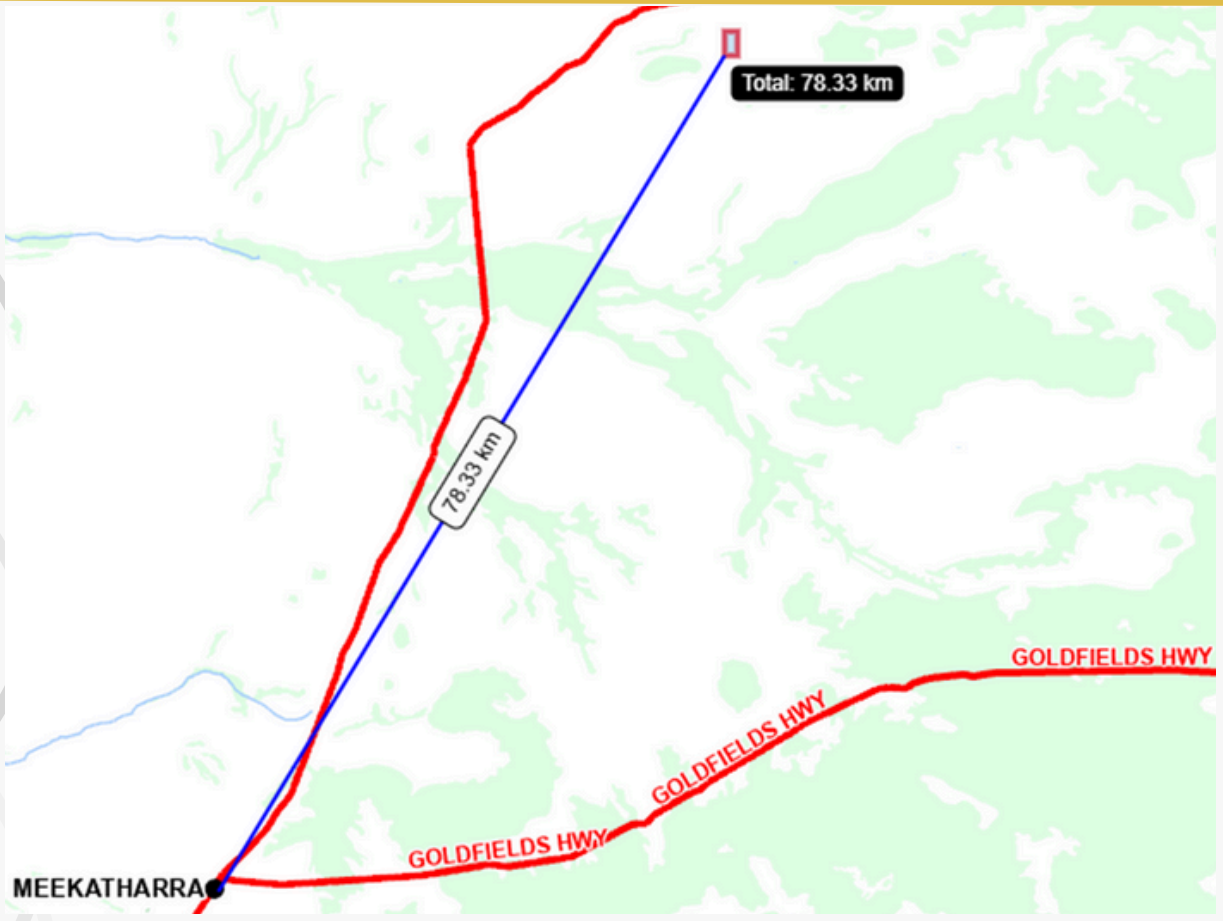
1:250 000 Map Sheet- PEAK HILL SG50-08

Lease is located 78km Northeast of Meekatharra

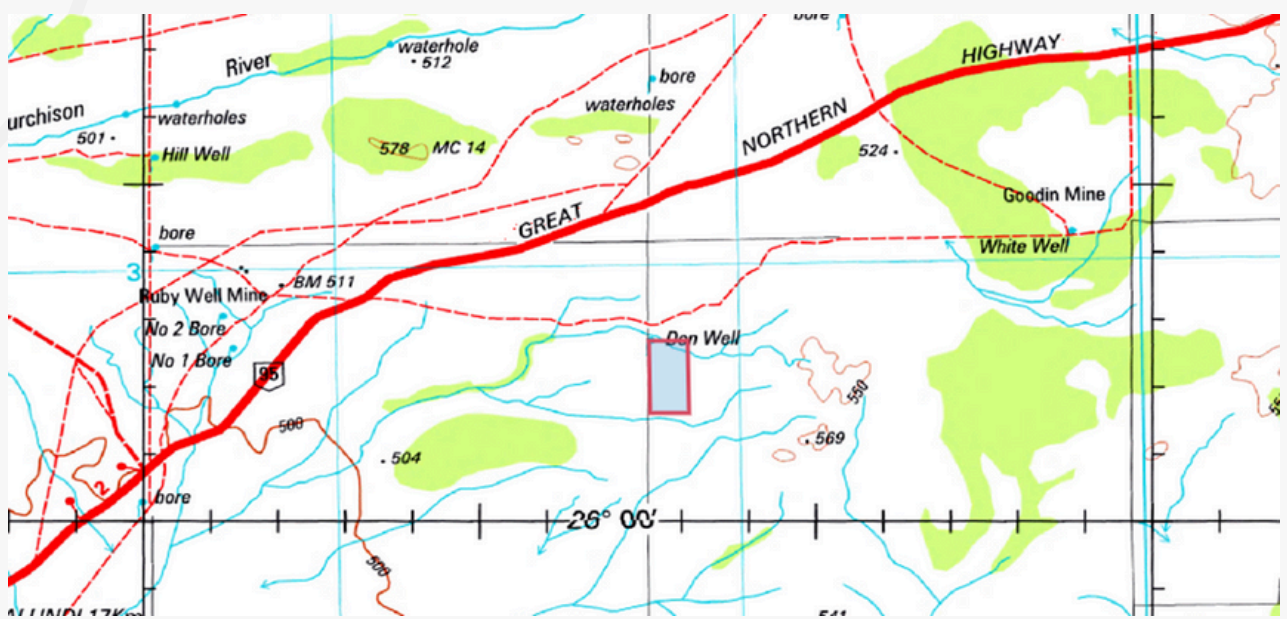
Latitude 25.96712/ Longitude 118.87994

Easting 688213/ Northing 7126604 MGA 94 Zone 50





**Figure 1 -** The Location of the tenement in relation to Meekatharra



**Figure 2 -** Local Infrastructure and Roads to the Tenement

## Overview

Tenement P 51/3400 contains a dynamic geological setting on the contact of two large basin systems, and has a known historic of gold exploration and mining.

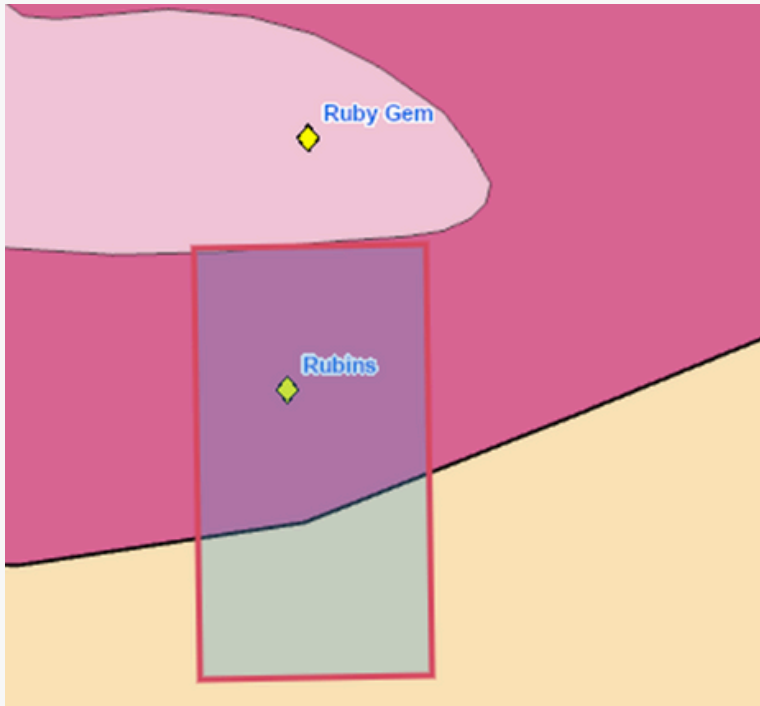
Prior drilling has identified an extensive zone in the north called Rubins, which already contains mineralisation of 6m at 1.11g/t in a historic drill hole.

In addition in the south three shafts have been identified by the prior owners, with assays collected. For on-ground grab assays the values are seen as "High-Grade" with three separate individual assays exceeding 5/gt and the best assay being 16g/t. Notable these come from the mullock piles indicating either these ore piles were left behind, or this was not the main high grade zones of the historic mines. No prior recording on maps are present for these workings.

Lastly a prior owner has conducted what appears to be extensive pushings. The nature of these indicate a high level of success was reached however the depth and age of the pushings appear shallow and old providing some hope of successful re-workings with a larger machine and newer detectors.

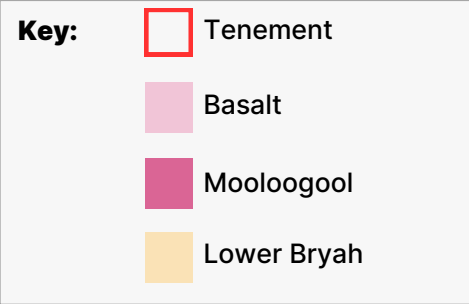
# Geological Overview

The tenement located on the contact between two separate basin systems, being the Mooloogool Group Sandstone in the south and the Bryah Lower Sandstone Group in the north. This contact is one that's relatively complicated with increased mineralisation potential between these two larger basin style systems.

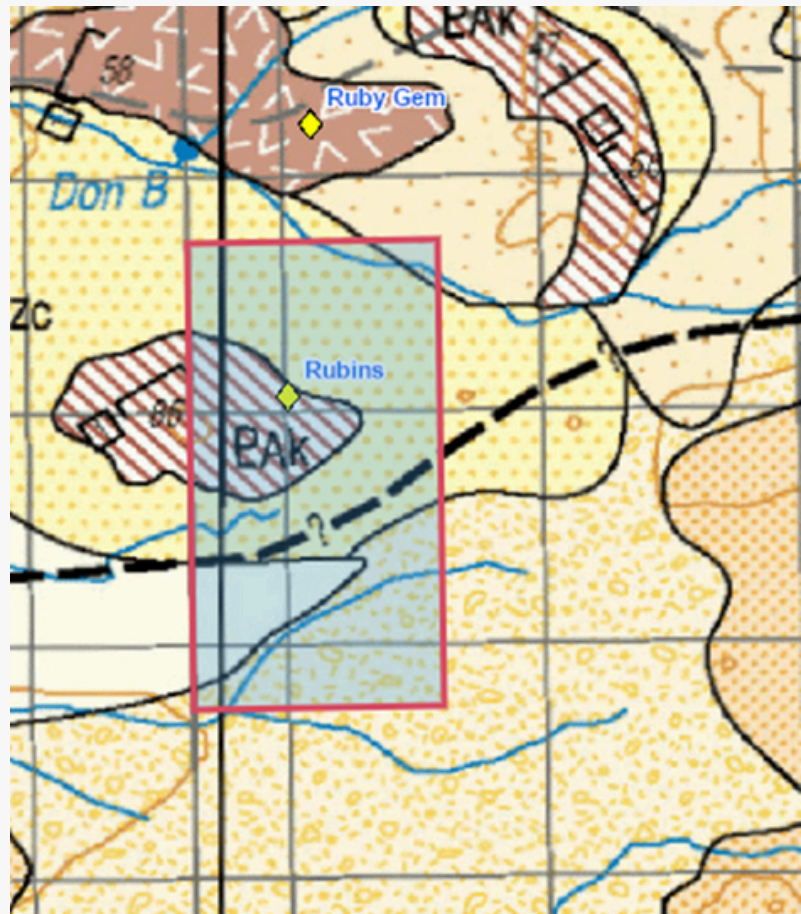


Regional mineralised sites indicate a general northeastern-southwestern trend of mineralisation indicating this is the regional tensional direction, or at least dominant direction.

**Figure 3 -**  
Local Geology Map



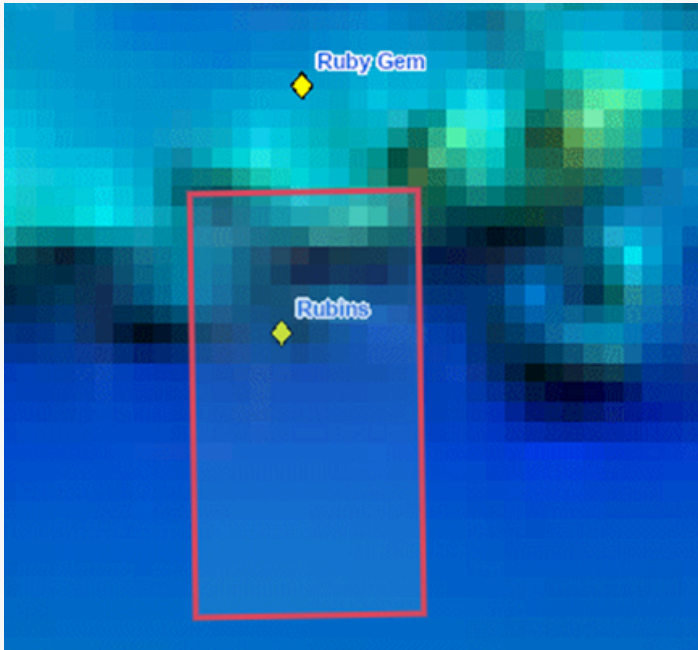
Geological 1:100k imagery indicate the location of a large outcrop of raft of material located in the centre of the tenement, and likely directly related to the local mineralised site of Rubins.



**Figure 4 -** 1:100k  
Geological Mapping

# Magnetic Geophysics Mapping and Overview

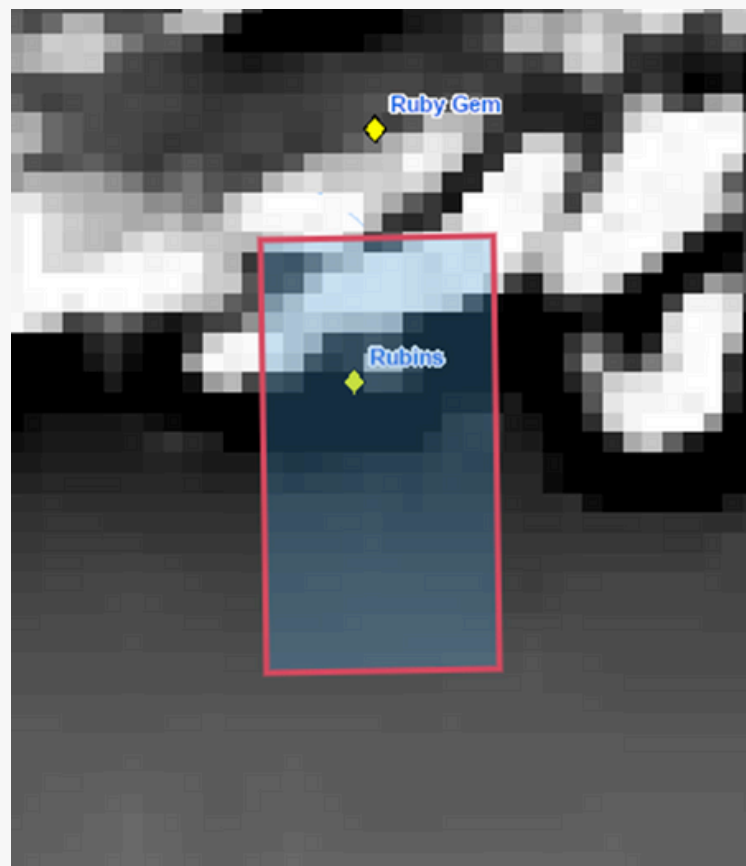
Magnetic and Gravity surveys have been collected throughout WA by the Geological Survey. The areas of elevated Iron and Magnetite appear on these maps as red in colour and are referred to as “Magnetic Highs”, with surrounding regions appearing as Blue in colour.



The tenement shows a strong magnetic signature on the contact of the two basin systems, which is somewhat expected on such a large and important contact. This magnetic signature looks associated with mineralisation at the Rubins site, and would provide increased potential for mineralisation proximal to the contact.

**Figure 5** - Normalised Magnetic Mapping with geological interpretations

First Variable Derivative (IVD) mapping provides extra resolution, and further correlated that there is a regional northeastern tensional direction with the magnetics on the Basin contacts following this in a somewhat sawtooth fashion. This mapping further provides contact to the location of the Rubins mineralisation site, and on neighbouring tenement the Ruby Gem mineralised site, with both lying on the end of a IVD high relief structure.



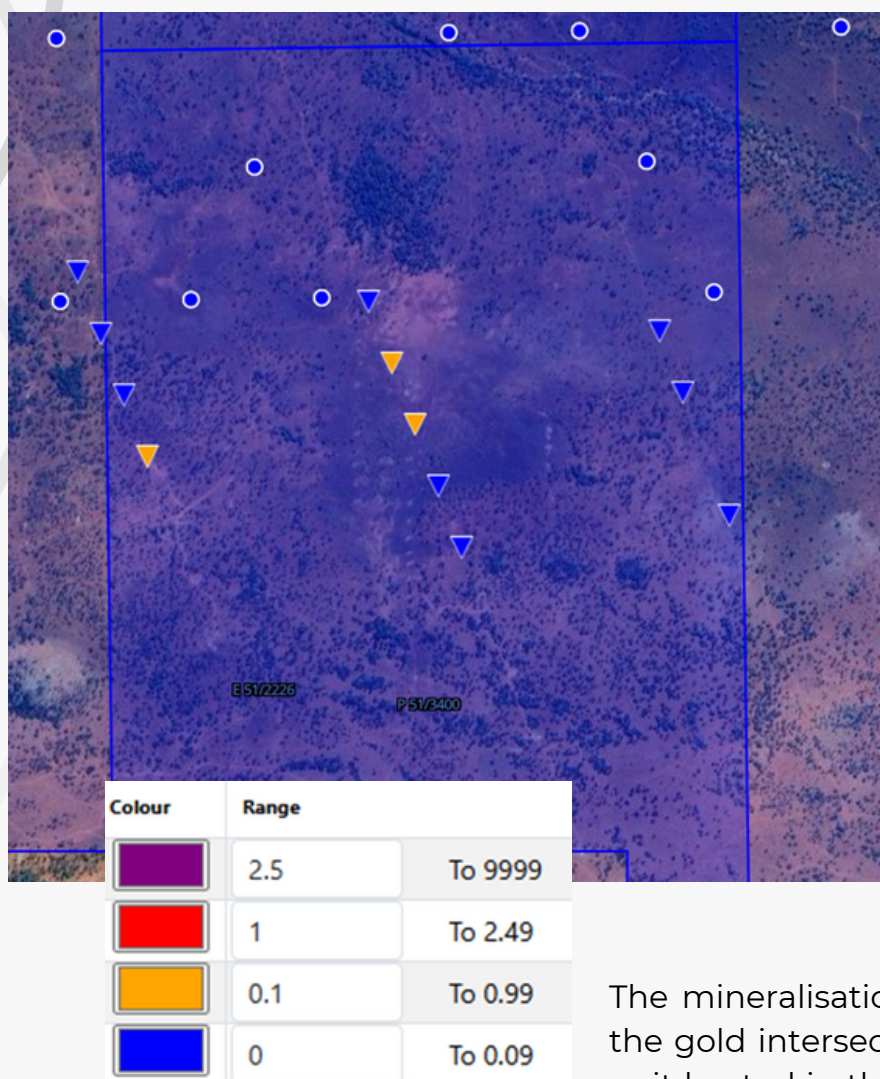
**Figure 6** - 1VD Magnetic Mapping

# Historic Drilling and Soil Sampling

The tenement has both soils and AC drilling conducted in the northern portion of the tenement, targeting the Basin contact and the parts of the tenement which lie on the Mooloogool Group Sandstones.

The mineralised site of Rubins is located via AC drilling, hitting an intersection of 6m at 1.11g/t, which is a highly economic intersection at today's gold price. This drilling was reported to be correlated with high Arsenic values in the region, a very common geochemical indicator.

This tenement was surrendered, and results thus released at the company exploring was a predominately Copper focused player, a common mineral in the Bryah basin region. The report from 2008 is not yet digitised on most formats, meaning that prior prospectors would not have had full availability of this information for quick review, and that common apps will not yet show this value as present.



**Figure 7** - AC Drilling results showing best AU in hole at ppm (g/t)

The mineralisation notes suggested that the gold intersect was within a Volcanics unit hosted in the greater Sediment unit. The gold appeared to be related to quartz veining within this volcanics unit.

Digitised AC drilling has been conducted more recently and suggests a large scale anomaly throughout the region, best seen in the 1:100k mapping figure. This anomaly shows 3 separate AC holes hitting values of 0.1g/t or greater at 10m of shallow depth. This is quite significant for the range of area these AC holes cover.

# Prior Mining Operations and Recent Sampling

During their time applying for and owning the tenement, the prior owners have identified a number of old mining shafts and workings which indicate a larger, lesser known gold system present in the region.

Imagery show that this history of prior workings is relatively immense, with existing mullock heaps, and shafts supported by timber. Figures below show some of these workings in depth.

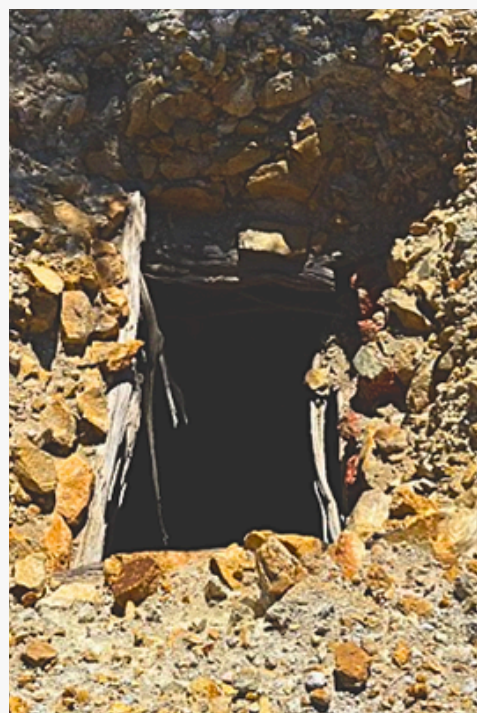
Samples were conducted over the tenement area and sent for analysis to ppb (parts per billion) which can then be converted to g/t or ppm. This line of shafts is well away from the Rubins mineralised site and appears to follow a North-South orientations. Results from the sampling here of picked mullock heaps are tabularised below.

Location	PPB	PPM (g/t)
Northern Shaft Mullock 1	1750	1.75
Middle Shallow Working	989	0.989
Northern Shaft Mullock 2	540	0.54
Northern Shaft Handpicked 2	16800	16.8
Southern Shaft Mullock 1	1220	1.22
southern Shaft Handpicked	5050	5.05
Northern Shaft Handpicked 1	8060	8.06
Southern Shaft Mullock 2	1410	1.41

**Table 1** - Assay results from Shafts



**Figure 8 (L)** - Existing Shaft on tenement

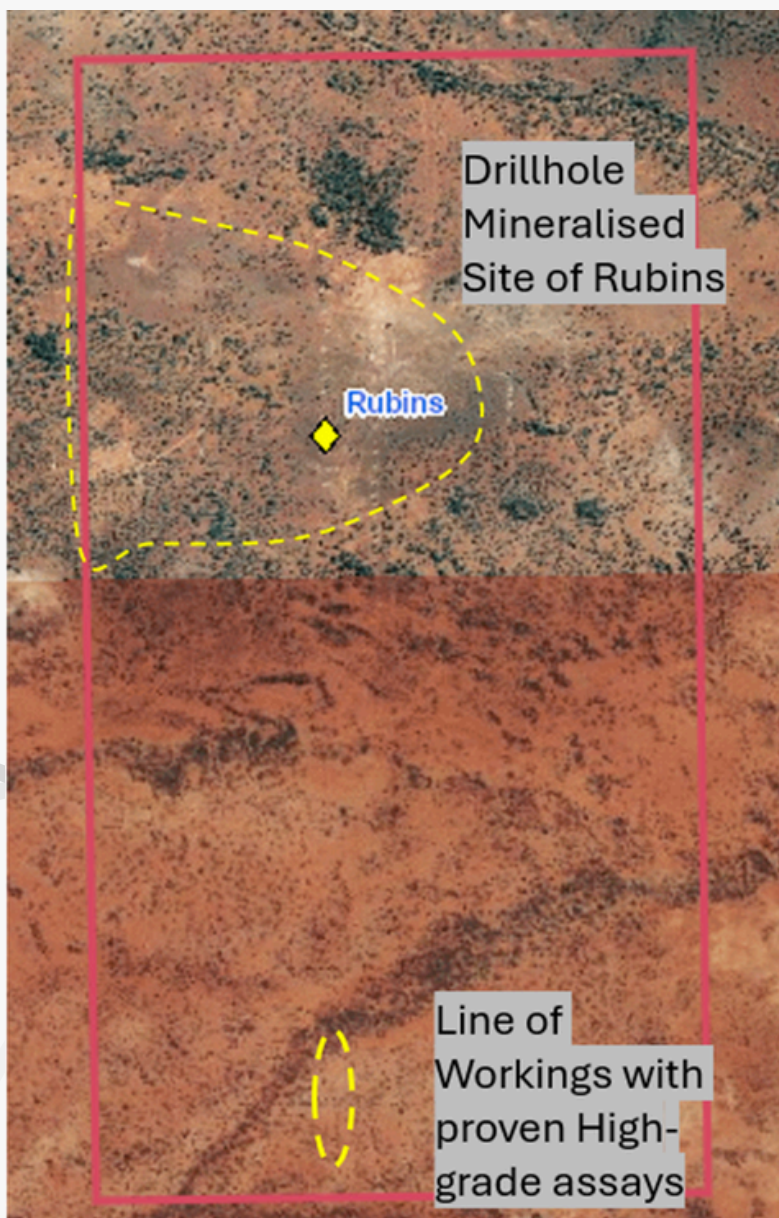


**Figure 9 (R)** - Wood lined shaft

## Gold Prospectivity and Future Work

The tenement has two high priority gold targets, with both presenting known gold mineralisation and suitable for different purposes.

In the south the line of three existing shafts shows proven gold mineralisation still present on the surface, with mullock heaps ready for economic processing. If gold is found to be coarse enough this may simply be possible through crushing and dryblowing/ washing. Grades in this region exceeded 5g/t in three separate assays. In addition the old shafts appear to be selective and not overly deep meaning that there is likely good potential to work the oxides above the shafts for gold. These were often left behind as they are not safe for underground operations and gold can often be smeared wider where weathering is stronger, not ideal for early miners who were chasing high grades only.



The area of Rubins indicates a high priority gold target, with a hole already showing significant economic mineralisation. The AC drilling digitised indicates this is a large zone of mineralisation with likely pockets or some extent which shows the potential to be economic. This area would be more seen as an exploration target.

**Figure 10** - High priority Gold targets

## Executive Summary

The tenement P 51/3400 has some high level gold opportunities being both modern in discovery and historic in nature. Gold has been noted in priori drilling which appears to indicate an extensive zone of possible mineralisation, with one hole already recording an astonishing 6m at 1.11g/t intersect. AC drilling further defines this target region as extensive.

Historic workings were noted in the southern most portion of the lease, with a line of three shafts noted, and assayed. Grades here were recorded as high grade with three separate assays exceeding 5g/t, notably some from Mullock piles remaining.

Overall the tenement provides high value for future working, with two walk up targets suitable for different ownership groups.

This report was completed for  
*Complete Prospecting by Golden Strike.*

### Reporting Geologist -

Lachlan Kenna  
BscGeology (Hons),  
MAUSIMM



All information in the above report is general in nature, and produced with publicly available data on the mentioned tenement and area.. Golden Strike Pty Ltd advises any party conduct their own research prior to any investment decisions.