

# Lease Report P 31/2193, P31/2194 & P31/2195

→ Complete Prospecting

## Location Details

1:250,000 Map Sheet: EDJUDINA SH51-06

1:100,000 Map Sheet: YERILLA 3239

1:50,000 Map Sheet: RAESIDE 32392

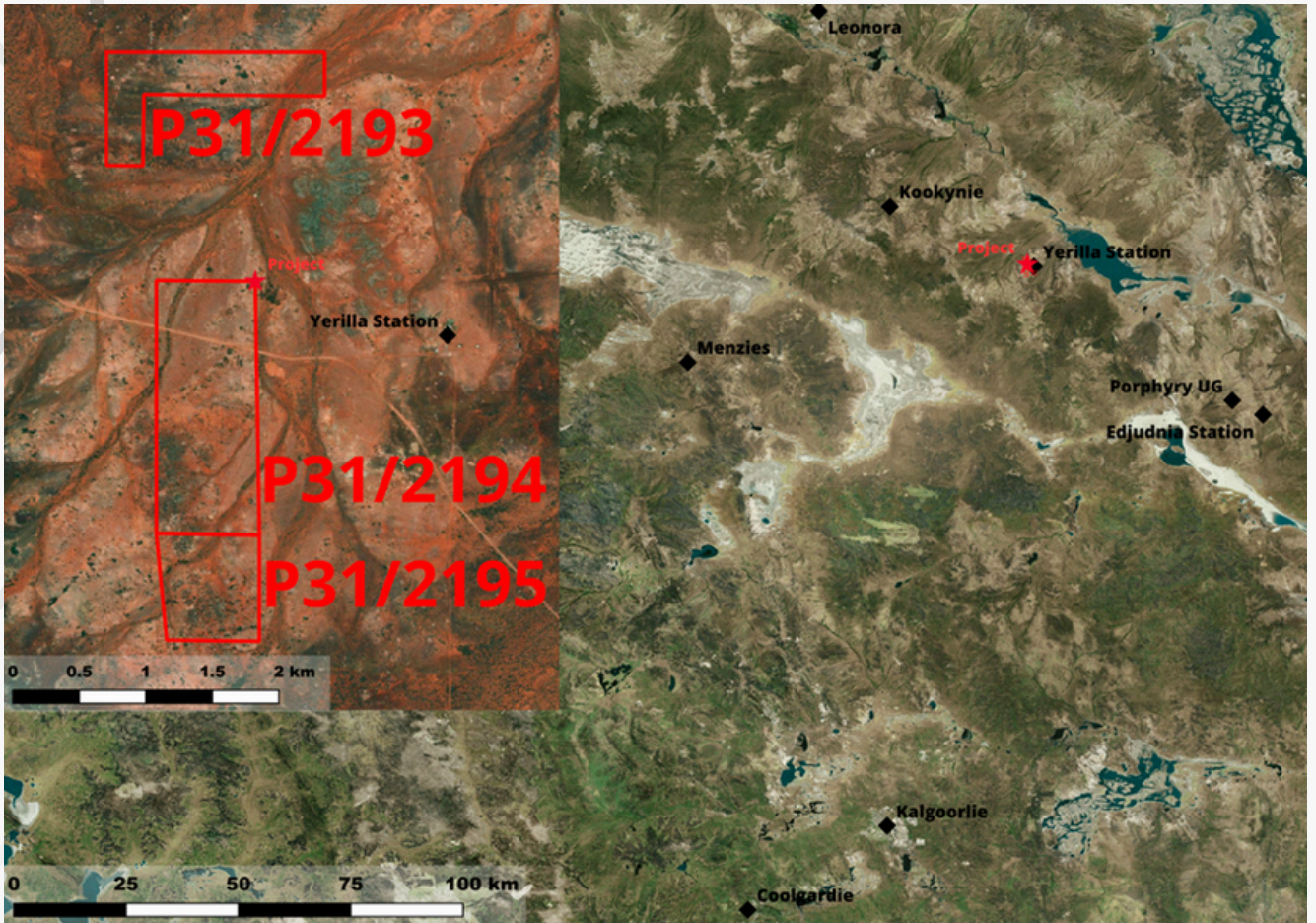
Latitude: 29.48726 || Longitude: 121.80772

Easting: 384417 || Northing: 6737435 || MGA94 Zone 51

~630km ENE of Perth, ~145k NE of Kalgoorlie, ~35km SE of Kookynie &

2km W of Yerilla Station





**Figure 1** - Tenement location map.

## Overview

Tenement P 31/2137 is a live (grated 4 years with option to renew) prospecting (P) tenement that covers an approximate 146 hectares of fertile/ prospective ground within a known gold mineralisation area of the West Australian Eastern Goldfields. The project contains a broader interbedded sequence of an ultramafic intrusive and mafic intrusive (being paleo-seafloors) with granitic and mafic intrusions displaced within.

The project is situated within the Murin Domain of the Archean Yilgarn Craton. Within 80km of the project JORC compliant resource estimates claim over 7.87 Moz of Au. This includes Northern Star's Porphyry underground mine, immediately west 5km of the project. Within the project, two historic underground operations (1905-1939) recovered a reported 2364.3 oz of Au and had approx. total lateral development of 32 metres.

The tenement entirely comprises of Archean greenstones, the geological units which host primary mineralisation within the Western Australian Goldfields. Structural and geological interpretations of the tenements underlying geology confirm its prospectivity for primary (in-situ) gold mineralisation along with alluvial nugget mineralisation. The greenstones are exposed at surface, with minimal soil/cover, appearing as a series of rocky hills and gullies all in a N-S/ NNE-SSW orientations.

The project has undergone early-stage modern exploration, mainly focusing on the known mineralisation within the historic workings. The project has had a total of 265 surface samples taken (database uploadable) with further unrecordable samples) with max recorded assay values of 4.52 g/t and values up to 57.8g/t in underground workings. The project has had 7 drillholes for a total of 341m with the highest recorded intercept at 1m @ 1.67 g/t Au, although drilling is still minimal and further exploration drilling is recommended. The total estimated value of drilling and surface sampling is ballpark, \$17,500 Aud. The tenement recently underwent a detailed mapping and surface sampling campaign by the report writer to further refine the trend of mineralisation within the historic workings.

## Regional Geology

The project lies within the Menangina Domain, part of the Kurnalpi Terrane in the Eastern Goldfields Superterrane of the Yilgarn Craton, Western Australia. The Yilgarn Craton is an Archaean crustal province exceeding 650,000 km<sup>2</sup>, composed of ancient granite–greenstone terranes that preserve a long record of volcanic arc and basin development between 3.05 and 2.62 billion years ago. These greenstone belts host many of Western Australia's premier gold and base-metal deposits, formed through multiple orogenic and hydrothermal events linked to the emplacement of granitoids and reactivation of crustal-scale fault systems.

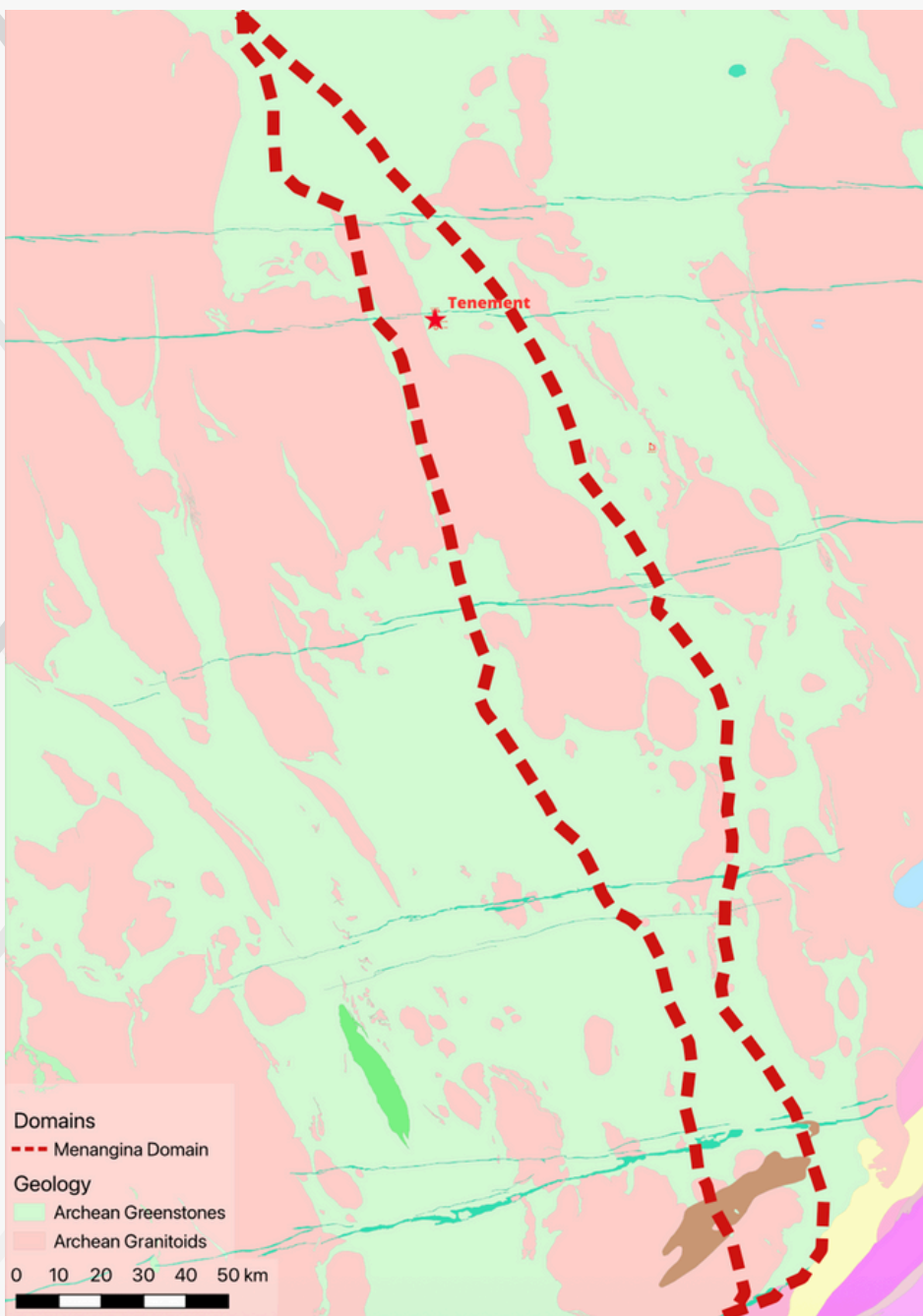
The Kurnalpi Terrane forms the eastern sector of the craton Yilgarn and records the evolution of a Late Archaean volcanic arc–basin system. It comprises interbedded mafic to felsic volcanic sequences, volcanoclastic sediments, and syn- to post-tectonic granitoid intrusions that collectively represent prolonged crustal growth along a convergent margin. The terrane is bounded by the Ockerburry Fault System to the west and the Hootanui Fault System to the east, with several internal domains — including the Gindalbie, Murrin, Laverton, Edjudina, and Bulong Domains — each preserving distinct volcanic and structural histories.

The Menangina Domain (project domain), is located between the Gindalbie and Murrin Domains. The strata consists predominantly of basaltic, gabbroic, and ultramafic volcanic rocks, interlayered with andesitic and felsic volcanic units, with minor fine-grained metamorphosed sedimentary units culminating within ancient basins. These lithologies indicate alternating mafic and felsic volcanic activity with sedimentary deposition inbetween – typical of an evolving volcanic arc environment. The domain is characterised by intense foliation, local mylonitisation, and amphibolite-facies metamorphism, reflecting deeper crustal deformation and reworking during terrane growth. Widespread chemical alteration and the presence of north- to northwest-trending shear zones highlight the area's structural complexity. The adjacent Kilkenny Fault Zone, extending for over 300 km, separates the Menangina and Murrin Domains and is associated with the Pig Well–Yilgangi Formation, a fault-bounded sequence of conglomerates and sandstones representing late-stage basin deposition.

These major fault systems, including the Keith–Kilkenny Shear Zone, provided long-lived conduits for hydrothermal fluid migration.

Consequently, the Menangina Domain represents a structurally favourable setting for orogenic gold mineralisation, where deformation, alteration, and lithological contrasts combine to form highly prospective mineralised corridors within the broader Eastern Goldfields Superterrane. Furthermore, the project is located within a centralised portion of the geological domain within a cluster of Meso/ Neo Archean mafic, ultramafic, sedimentary and felsic geological units (commonly referred to as greenstones), to the west, later – stage Mesoarchean granitoids have been emplaced (Yilgarn Craton Granite Magmatism 3010-2600Ma). These greenstone units then underwent intense geological stress in deformation caused by regional tectonic reactivation, from both extensional and subductional stresses (Eastern Goldfields Superterrane Events 2960-2600Ma). Later

mafic-intermediate intrusions were deposited over the region, mainly from the Widgeemooltha Magmatic Event (2420-2400Ma). Sediments (referred to as Quaternary Cover) have been emplaced in the form of soils/ sands since erosional forces calmed down (2.6Ma-Present), although minimal sands were found across the project with only evidence being over a flood-basin to the NE of P31/2193.



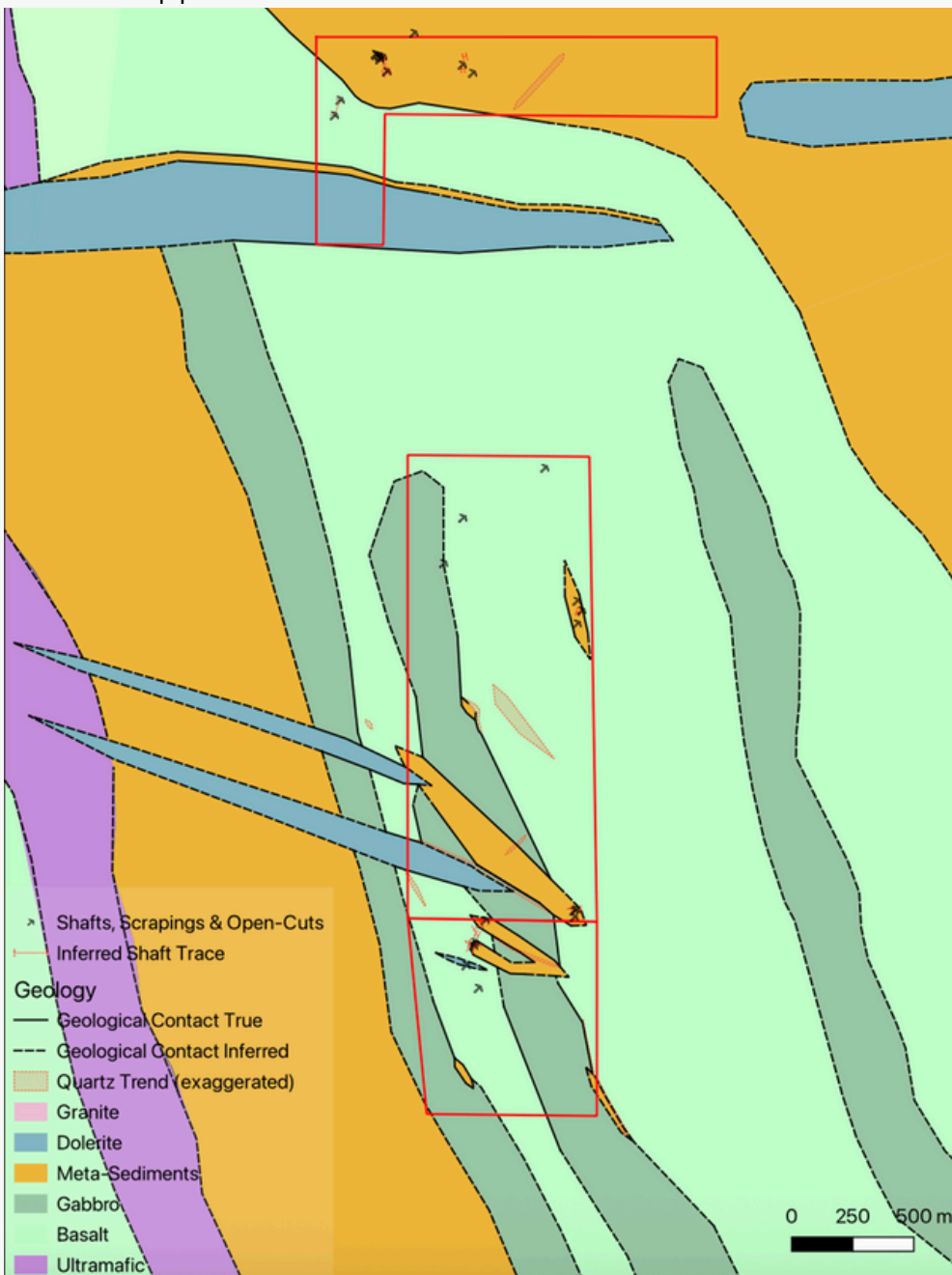
**Figure 2 -**  
1:500,000  
interpreted  
bedrock geology  
of the Menagnina  
Domain

# Local Geology

The general (1:500k) trend of the geology of the “greenstones” around the Yerilla/ Project area contain an interbedded series of a relict oceanic floor, with ultramafic units (older), metasedimentary units (derived from oceanic sediments) and Basalt (younger). These units would have originally been deposited horizontally and through metamorphism/ tectonic movement, these units have been rotated almost vertically.

There is a general N-S oriented trend to these paleo-basin units, further intrusive magmatism has emplaced Gabbro and Andesite which appear in NNW-SSE trends across the area. The different orientation of

these intrusive units mean these units were either emplaced more horizontally as the paleo-basin floor was first being rotated, or were emplaced post-rotation, as vertical intrusions (although cross-cutting relationship of metasedimentary units indicates more horizontal deposition whilst area was still an active seafloor). Large Granitic plutons/intrusions have been emplaced to the E&W of the Yerilla area, with a smaller Granitic dome intruded within the greenstone sequence.



**Figure 3** - Field mapped geology of the project

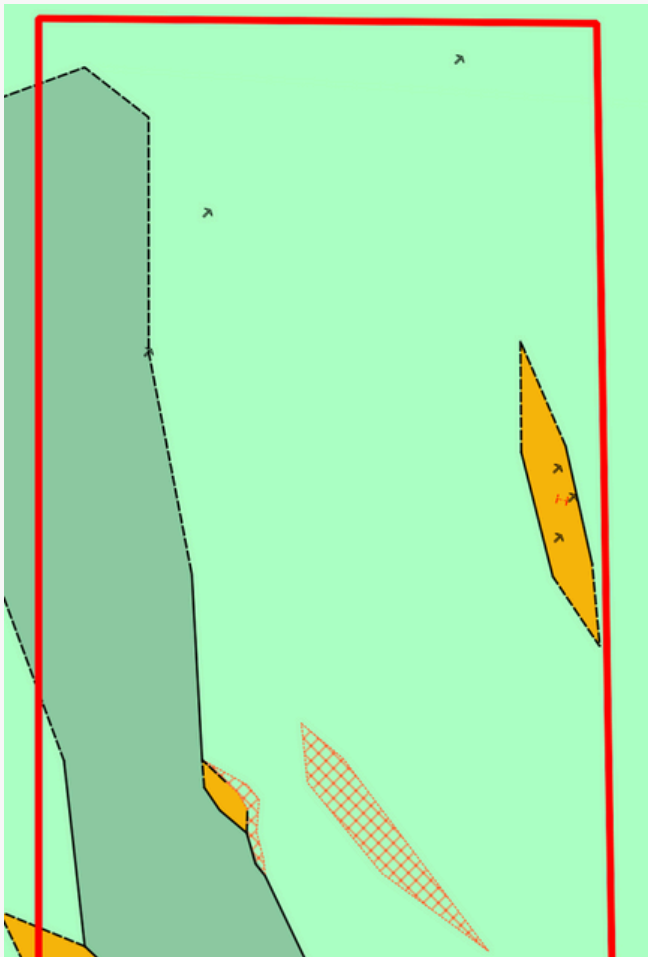
All the aforementioned units, minus the Granitoids, have underwent greenschist facies metamorphism (low/med strength). Metamorphism has occurred over these units through a combination of tectonic stresses related to the rotation of the units alongside the introduction of heat from the granitoid emplacement. Post Granitic volcanism an E-W trending Dolerite Dyke (intrusion) Swarm has crosscut the entire stratigraphic column, likely from the Widgemooltha Dolerite Swarm.

On-field geological mapping of the project further refines the geology over the project, The southernmost tenements of the project (P 31/2194-5), comprise of the dominant paleo-floor, containing a portion of the N-S striking, mafic-extrusive Basalt, with two mafic-intrusive Gabbros intruding NNW-SSE through the Basalt. The Basalt is aphanitic in texture and rarely contains thin quartz-carbonate (qtz-cbt) veining (>1%) whereas the Gabbro both show spinifex textures, are amphibole/ pyroxene dominant and show qtz-cbt veining (~2%).

Also within the southernmost tenements, smaller pockets of a quartz/volcanic tuff-dominant Metasedimentary unit crosscut the Basalt/ Gabbro, indicating topographical infill (basin infill) of a paleo seafloor. These "Met-seds" are fine-grained, contain ~90% quartz with 10% clay-like volcanic tuffs, they strike NW-SE and are max 180m wide, quartz veining has been observed along portions of this units contact with the surrounding units. Small (150m wide) NWW-SEE striking Dolerites also crosscut the tenement area, being fine grained, and consisting of a matrix of amphiboles, pyroxene and feldspar.

The northern tenement (P 31/2193) contains the contact between a larger, quartz (only) dominant metasedimentary unit (Sandstone) and the same Basalt as in the southerly tenements. This Basalt is cross-cut by a significant E-W striking Dolerite intrusion being 350m wide. A thinner Met-sed more similar to those in the south, hugs the northern contact of the Dolerite (max 20m). Across the majority of the Sandstone to the NE, Quaternary transported cover (sands/ clays) covers the Sandstone in a broad-floodplain, bedrock below was not able to be completely verified although no mafic outcroppings were observed.

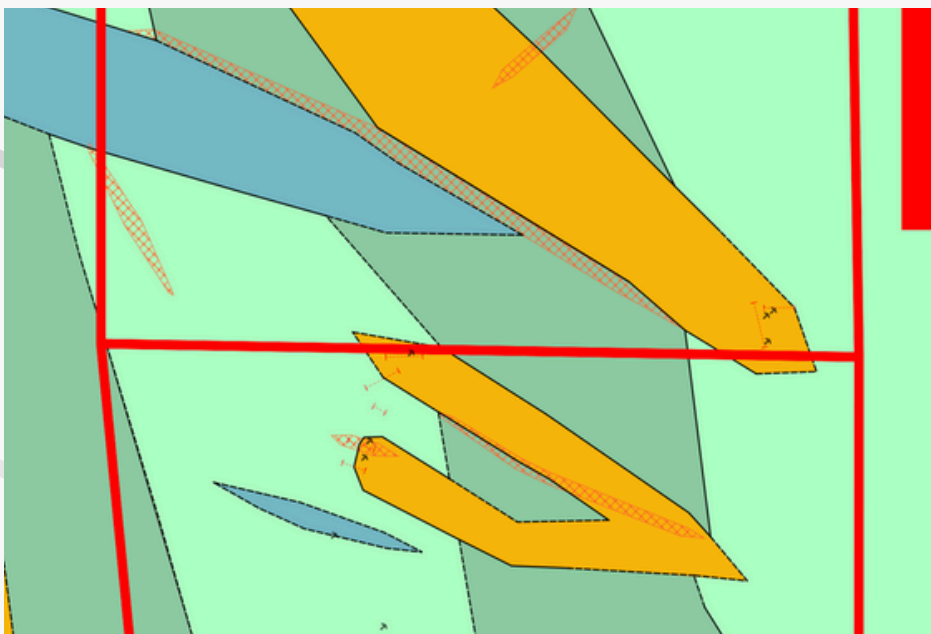
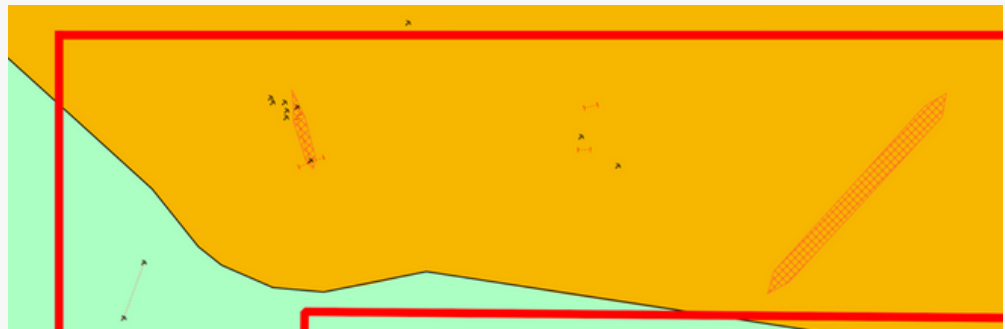
From a topographical viewpoint, the Gabbro and Dolerites are elevated (as small hills) from the Basalt and Sedimentary units, which are smoother and lower in elevation. The tenement comprises entirely of Archean granite-greenstone units and geologically (along with evidence of historic surface and underground workings), shows



prospectivity of primary Au mineralisation along with alluvial-nugget mineralisation.

Kurnalpi Terrane Greenstones were originally emplaced in semi-arid paleoclimates and underwent the majority of their weathering in these climates. These climates are indicative of seasonal meteoric/ groundwater level changes, which promotes supergene enrichment of ore-zones near surface and depletion deeper into the regolith. Supergene enrichment/ depletion does not alter primary mineralisation within fresh, unweathered rock.

**Figures 4 -** close up of field mapping including workings locations



*At the confirmation of sale of the project, geological maps of the tenement will be provided for use in WAMEX reporting/ further exploration.*

## Local Mineralisation

The project is surrounded by several operating and advanced gold projects within the Kurnalpi Terrane, reflecting a highly mineralized corridor of the Eastern Goldfields Superterrane.

51km NW, Genesis Minerals Ulysses/ Admiral UG/OP operations are actively in production, with a combined mineral reserve of 430 Koz Au @ 3.6 g/t. 57 km SE, Northern Star's Porphyry project has multiple mined open-pits and one current underground decline. Hosted in altered porphyritic intrusives and felsic volcanics. Northern Star's Carosue Dam operation, (located ~92 km S of the project, is hosted within intermediate volcanics along the Keith-Kilkenny Shear Zone. The latest combined mineral resource estimate of NSR's Carouse Dam Ops holds 6 million tonnes of ore @ 2.1 g/t for 4.2 Moz Au.

To the NE (~65 km), Legacy Iron Ore LTD's Mt Celia Project (Kangaroo Bore and Blue Peter deposits) are producing gold from deformed mafic volcanics along regional shear zones, with the latest resource estimate holding 6.97 Mt @ 1.39 g/t for 312.6 Koz. Similarly NE (~62km), Brightstar Resources Second Fortune UG occur within shear-hosted quartz-sulphide vein systems in felsic volcanics and porphyritic intrusives with 165kt @ 10.9 g/t for 58 Koz

74km N, Anglo Gold Ashanti operates the Sunrise Dam project, with a measured and indicated resource of 57 Mt @ 1.8 g/t for 3.3 Moz. There is also further than gold prospectivity within the region, about 120 km east, the Mulga Rock Project represents a proposed open-pit uranium mine hosted within Tertiary sediments overlying Archean basement and 82km NE Glencore's Murrin Murrin nickel-cobalt mine operates.

## Previous Exploration

Gold was initially discovered in Yerilla in 1895, mining commenced in three major periods being, 1897-1899, 1903-1915 & 1930. Pre 1969, a total of 16,171 oz of Au was extracted from the Yerilla region at a head-grade of 23.47 g/t. Post 1969, modern exploration of the Yerilla region commenced as Nickel exploration, before focusing more strongly on gold after the 1990's.

Across the project tenements the three major explorers who contributed the most on-ground data were Mt Kersey Mining NL in the late 90's, Wild Acre Metals in early 10's and Saturn Metals in the late 10's. Further companies have explored regionally, listed below. Please note this summary is for the broader Yerilla area and if the report reader requires full transcripts of exploration across the tenement they are to contact the report writer.

**Pre 1990** – WMC & Australian Selection Pty Ltd: Nickel exploration.

**1991-4** – Great Central Mines NL: Aerial photography, Geological mapping, costeans, RAB/RC drilling, Aeromagnetic surveys

**1995-6** – CRA Exploration Pty Ltd: Nickel exploration

**1995-7** – Mt Kersey Mining NL: RAB/AC/RC drilling, multi-element EOH assays, GIS compilation, surface sampling, data review.

**1998-9** – Horizon Mining: Surface sampling, data review.

**2008-13** – Minara Resources: Nickel exploration

**2012-3** – Wild Acre Metals: RC/RAB drilling, data review, target generation

**2015-6** – Peel Mining LTD: data review

**2017-20** – Saturn Metals: Geophysical surveys, gravity surveys, surface sampling, desktop reviews, AC drilling, EOH multi-element assaying, target generation.

## Identified Au Targets (Prospects)

Two significant shaft systems are located within the project, along with two un-recorded systems. WAMEX lists a drillhole prospect within the project (although exact drillhole collar cannot be recovered). Another recorded UG shaft system is also recorded 80m W of the tenement boundary of P 31/2194.

The “Black Gin” UG workings are located within tenement P 31/2193, mined between 1897-99, the workings have a (recorded) historic production of 88 tonnes of ore @ 14.379 g/t for a total of 40.7 oz. (254,805.16 AUD 15/11/25). On-field mapping confirmed the presence of these workings within the project and have identified the mineralisation style to be quartz-bearing + sulphide disseminated along the contact of a meta-sedimentary unit and the Basalt host-rock. 4 shafts were observed from surface with approx. 115m of development/ stoping was observed from surface.

The “Hermes” drillhole prospect is recorded within tenement P 31/2193, it is recorded through WAMEX reporting as quartz veining along the Basalt/Dolerite contact, the prospect is based off a historical drillhole anomaly of 21m @ 5.43 g/t from 84m depth (hole KSC1034). Unfortunately, WAMEX historical data does not have a collar location for KSC1034 and an on-field analysis around the proposed drillhole collar



**Figure 5 - Black Gin Workings**

could find no evidence of drilling, further analysis/ contact with Saturn Metals (prospect identifier) is required to locate this significant drillhole anomaly. From drilling in proximity to this anomaly, no further replication of this intercept can be found.

Un-named workings were observed from in-field geological mapping within an isolate metasedimentary unit, within the NE boundary of P 31/2194. 3 shafts were observed, with 15m of development/ stoping visible from surface. No WAMEX records are available for these workings although mullock-heap sampling returned negligible assays @ 0.02 & 0.06 g/t Au.



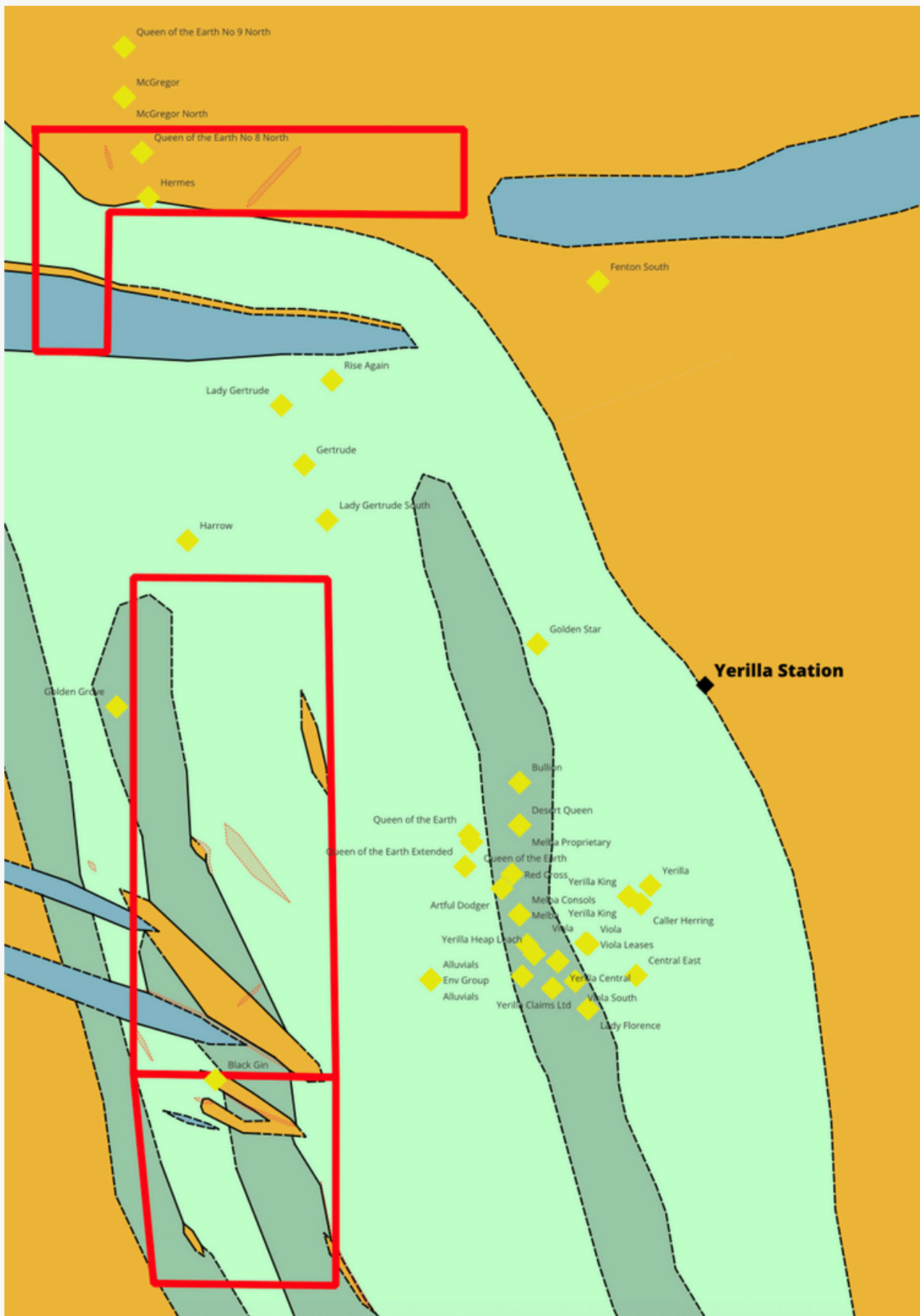
**Figure 6** - Un-named workings from P 31/2194

At the “Queen of the Earth (#8 north)” workings area, a sizeable shaft system was observed within P 31/2193. The workings have minimal (recorded) production of 2 oz total Au recovery (\$12,466 AUD 15/11/25), mined in 1897, although the evident size of the workings appear to reflect otherwise. 9 shafts were recorded across the location with 100m of visible surface development/ stoping. Historical grab samples within these workings have peak Au values of 1.145 g/t within mullock sampling. In-field assaying of a quartz vein within the main workings of the system

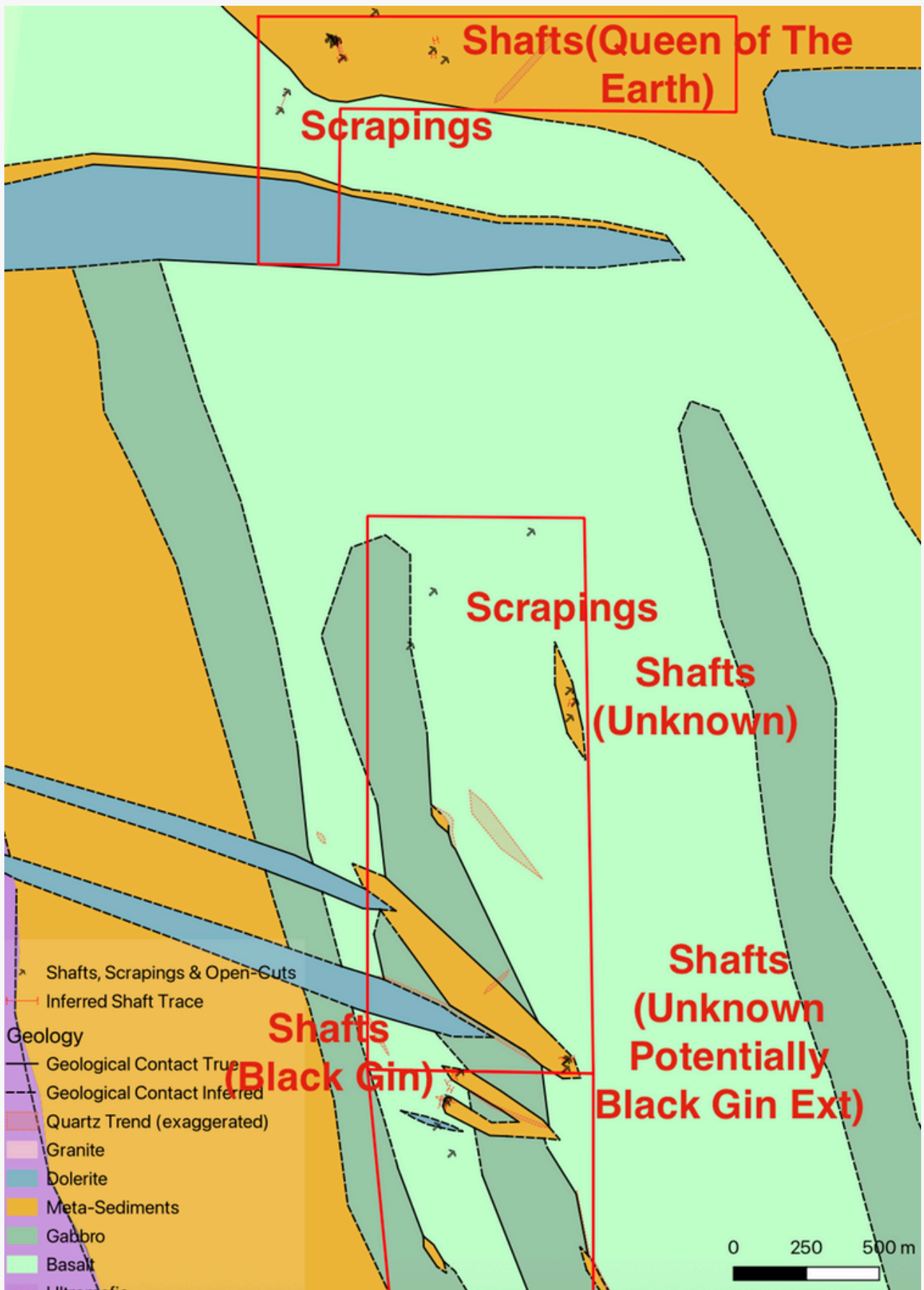
recorded grades of 2.2 (2.17 repeat) g/t Au, for a vein width of ~40cm. The entire “Queen of the Earth” system has a recorded total production of 2861 oz for \$17.8 million AUD (as of 15/11/25). Mineralisation is hosted within N-S striking quartz veins within a Sandstone unit, further drilling is recommended to define the (potentially 70m strike) of the lode, along with UG surveying, to confirm workings are significantly more than 2 oz worth.

More unrecorded workings, this time due east (350m) of the main “Black Gin” workings were also identified though on-site analysis. These workings, although potentially related to the “Black Gin” workings, have no WAMEX historical records. Historical grab sampling of Mullock piles have returned with grades of 12.95 g/t Au. Further on-field sampling has returned mullock samples of 9.17 g/t Au (8.81 repeat). Signifying the anomalous prospectivity of these workings. Two drillholes 250m NW of these workings have intersected anomalous mineralisation grades of 1m @ 1.08 g/t (HMAC0022) and 1m @ 0.65 g/t (HMAC0023) indicating a possible 250m mineralisation footprint. Mineralisation within these workings has been observed in gossanous quartz, within a metasedimentary unit, a total of 3 shafts were observed with 30 metres of visible development/ stoping.

80m west of P 31/2194, an UG shaft system is reported by WAMEX, reportedly mined in 1897, a total of 11 tonnes of ore was extracted @ 9 g/t (99g Au total). These workings were not visited since they were outside tenement boundaries and were low production, although these workings align with push-and-scrape workings within the tenement, indicating the potential for a small alluvial source of gold.



**Figure 7** - Location of workings in MINDEX



**Figure 8** - Types of workings within the tenement (bottom)

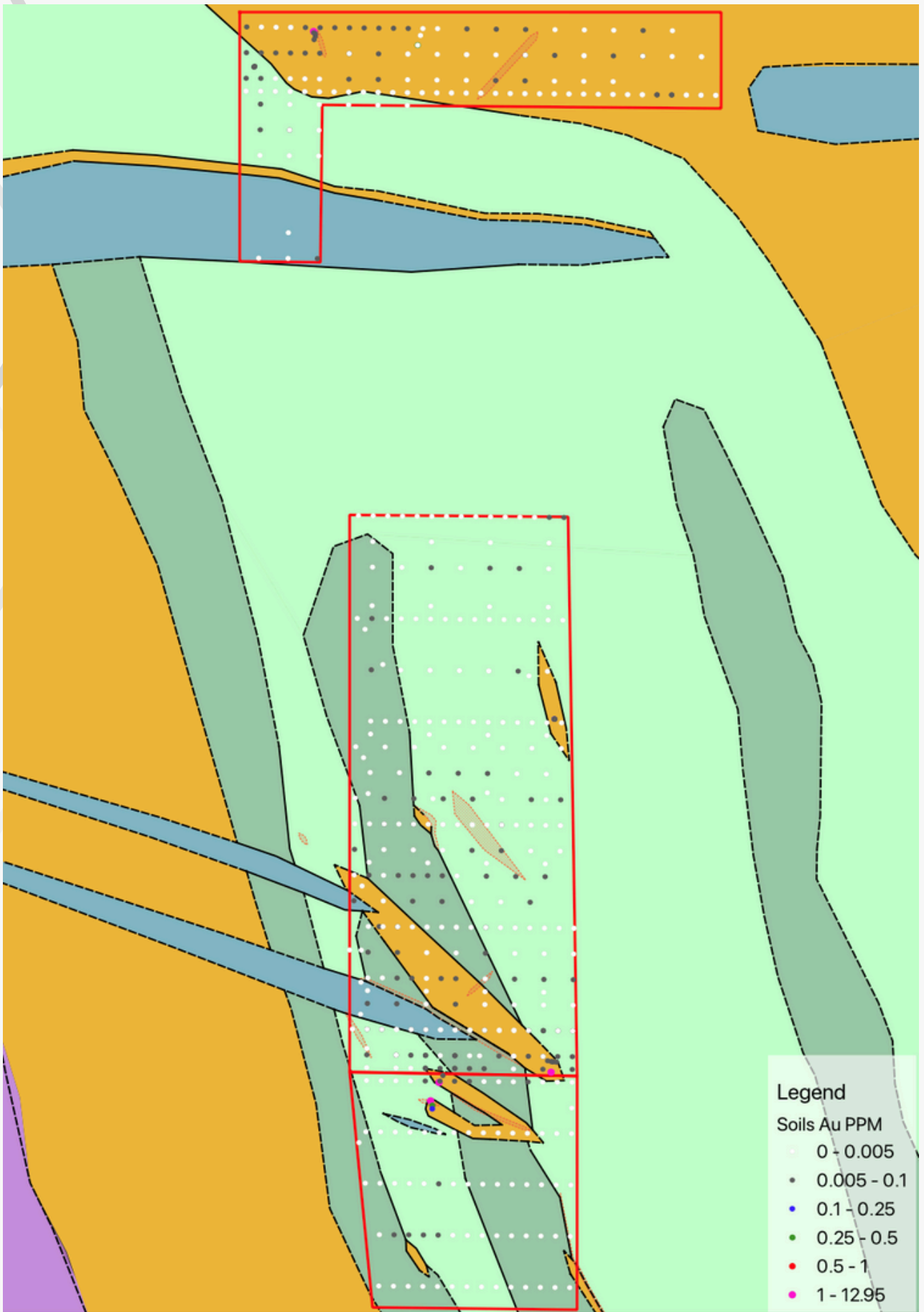
# Geochemical Surface Sampling Data

Within the tenement, numerous historic surface sampling campaigns have been conducted by Saturn Metals and Wild Acre Metals. These programs assess and sample geological points of interest on-surface and can be instrumental in generating prospective targets. Within the tenement two types of surface sampling campaigns have been conducted which are Soil Auger Sampling – where soil is assayed for gold/ pathfinder elements to generate targets and Rock chip sampling, where prospective rocky-outcrops are sampled to determine if further analysis is required.

A total of 528 surface samples cover the tenement, with 501 soil auger samples and 27 rock chip samples. 6 surface samples were recorded over 0.30 ppm Au with 4 over 1 g/t Au, the highest grades within the historical surface samples are all rock-chip samples by Saturn Metals, with grades of 12.95 g/t, 7.37 g/t and 5.36 g/t respectively. Although a substantial amount of data covers the tenement and some trends can be seen over soil anomaly maps, further data would be required (and more analysis over pathfinder anomalies) to generate through target maps. Individual samples with anomalous Au/pathfinder grades are still instrumental for on-field analysis. All aforementioned anomalous Au grades were visited in-field and were assessed for prospectivity, with positive outcomes.

The 12.95 g/t outcrop was visited and historic workings were observed along the outcrop, these workings were not recorded in WAMEX reporting and are believed to be un-related to the Black Gin workings some 425m to the west, follow up sampling returned more anomalous grades which will be mentioned further within the report, showing real prospectivity of being a significant primary gold bearing structure. The 7.37 and 5.36 g/t assays were confirmed to be Mullock sampling of the Black Gin workings, confirming the prospectivity of those workings and a 1.15 g/t assay was also confirmed as Mullock sampling of the Queen of the Earth workings – once again follow up sampling has displayed significant prospectivity of these workings, with a significant mineralised strike.

Rough estimations for the cost of historic surface sampling (as of 2025) would be over \$9,500 dollars, assuming \$18 per sample. Please note this is a conservative estimate and doesn't even take into account geological consulting/ interpretation time. A compiled spreadsheet with all Au surface sampling along with soil geochemistry collar maps will be provided after completion of purchase of the project.

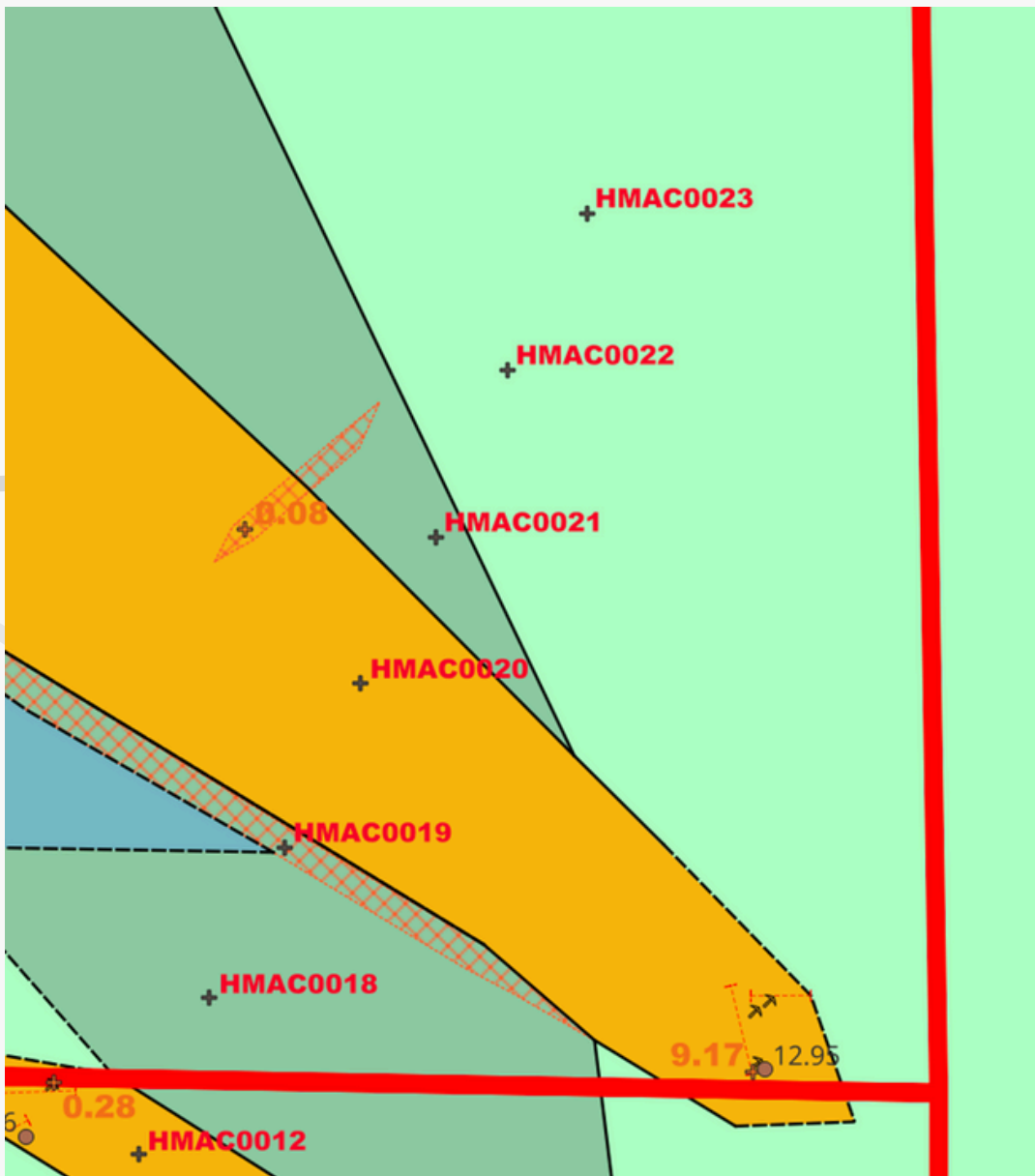


**Figure 8 -**  
Soil sampling data (values for Au)



Although all these holes were be sporadic – exploration “tester” holes (drilled cheaply using -90 degree AC/RAB in wide-spaced patterns). The Anomalous drilling in HMAC0022/23 deserve follow-up attention. Both these drillholes are next to eachother and are on a rough NW strike from the anomalous soil sampling data found in the unnamed workings to the E of the Black Gin workings. Creating a wide-spaced mineralisation footprint requiring further follow-up drilling.

Rough estimations for the cost of drilling (as of 2025) would be over \$17,900 dollars, assuming \$18 per sample (not even counting more expensive EOH multi-element assays) and \$22 per drill metre. Please note this is a conservative estimate and doesn't even take into account rig side geology fees and geological consulting/interpretation time. Drillhole data such as cross-sections, the drill collar spreadsheet and assay spreadsheet will be provided on completion of project purchase.



**Figures 11 -**  
Anomalous  
drillhole  
collars  
HMAC020-  
21 in relation  
to  
anomalous  
surface  
assays of  
workings

## Recent Geological Field-Work and Mapping

The project recently underwent an on-field, detailed geological mapping and sampling programme, investigating the prospectivity of gold-bearing structures within the tenement along with the confirming the style and structure of mineralisation within the Black Gin, Queen of the Earth and unnamed underground systems. All workings including open-casts, shafts, stopes, costeans and detector scrapings were recorded and mapped along with inferred traces of quartz mineralisation. Sampling of gossanous quartz outcropping was conducted on a select few anomalous outcrops, along with any unsampled quartz within the workings.



Geological mappings have identified the presence of smaller Dolerite intrusions across the project along with smaller metamorphosed sedimentary units. Mapping over the Black Gin historic workings identified the workings are hosted along the contact of a smaller metasedimentary unit and its contact with the Basalt/Gabbro. Large broader quartz veining trends were mapped, all historic metal-detecting evidence (including scrapings) were recorded including their locations. On-field mapping over the Queen of the Earth north workings has identified the mineralisation is within N-S striking quartz hosted lodes.

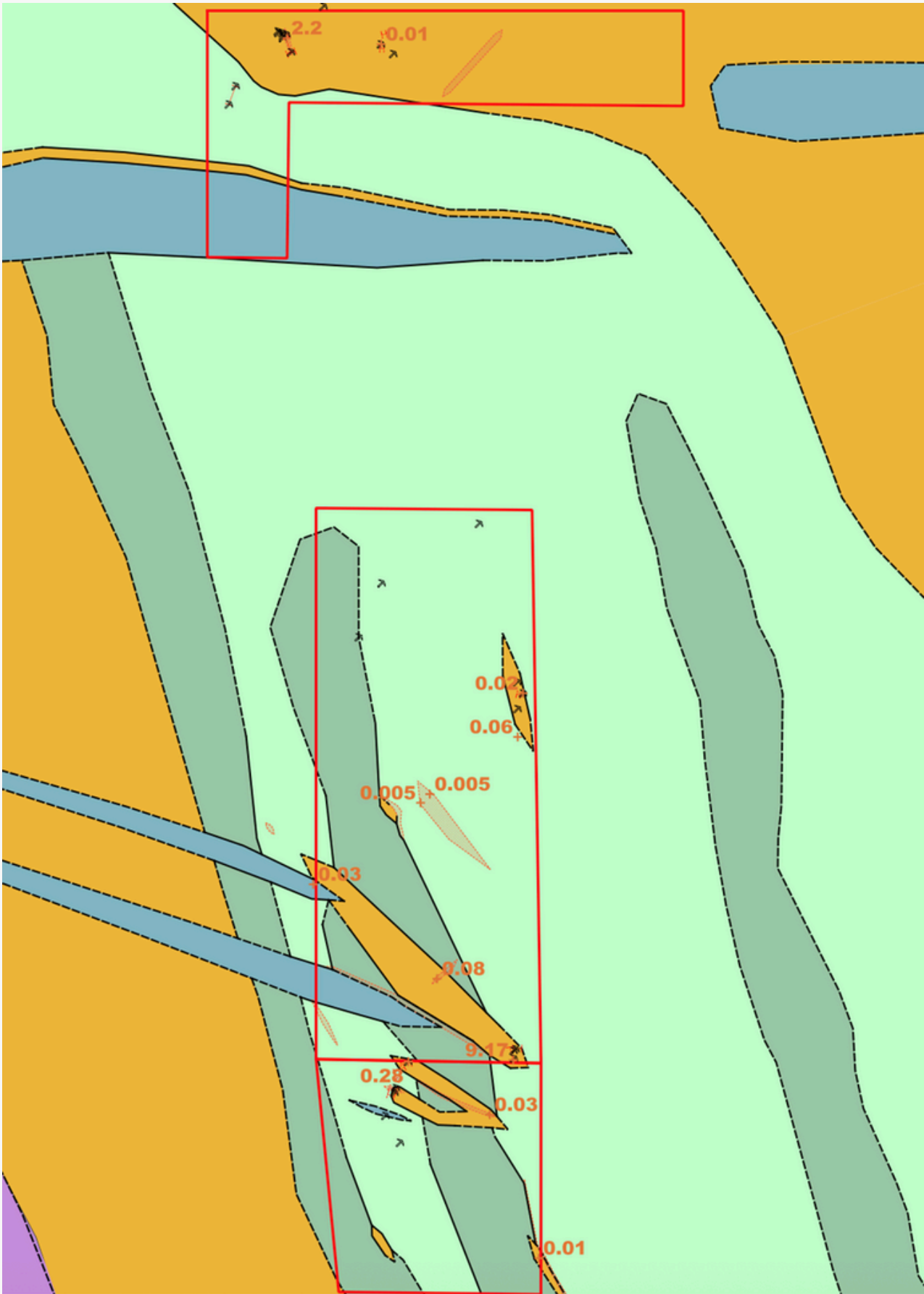
**Figures 12** - Quartz Samples with alteration veining and evident sulphides

Additional, unrecorded workings were also identified throughout mapping and surface sampling was conducted. A total of 12 rock-chip samples were taken in-field. The highest assays were one sample @ **2.2** g/t (2.17 g/t repeat), taken from a quartz vein in-situ inside the Queen of the Earth workings and another sample @ **9.17** g/t (8.81 g/t repeat) from gossanous quartz within a mullock pile in the workings east of the main Black Gin workings.



**Figure 13** - 2.2 g/t qtz vein ~40cm within wall of Queen of Earth (North) workings, (GS00304)

Findings from the on-field assessment find that the Queen of the Earth (north) workings are anomalous and require further in-field testing, including UG workings surveying and drilling, with a 50-80m mineralised strike (see prospects section). Findings also show the workings east of the main Black Gin workings are extremely anomalous/prospective, with a potential 50m footprint, drilling continuation to the north and limited historical data (see prospects section).

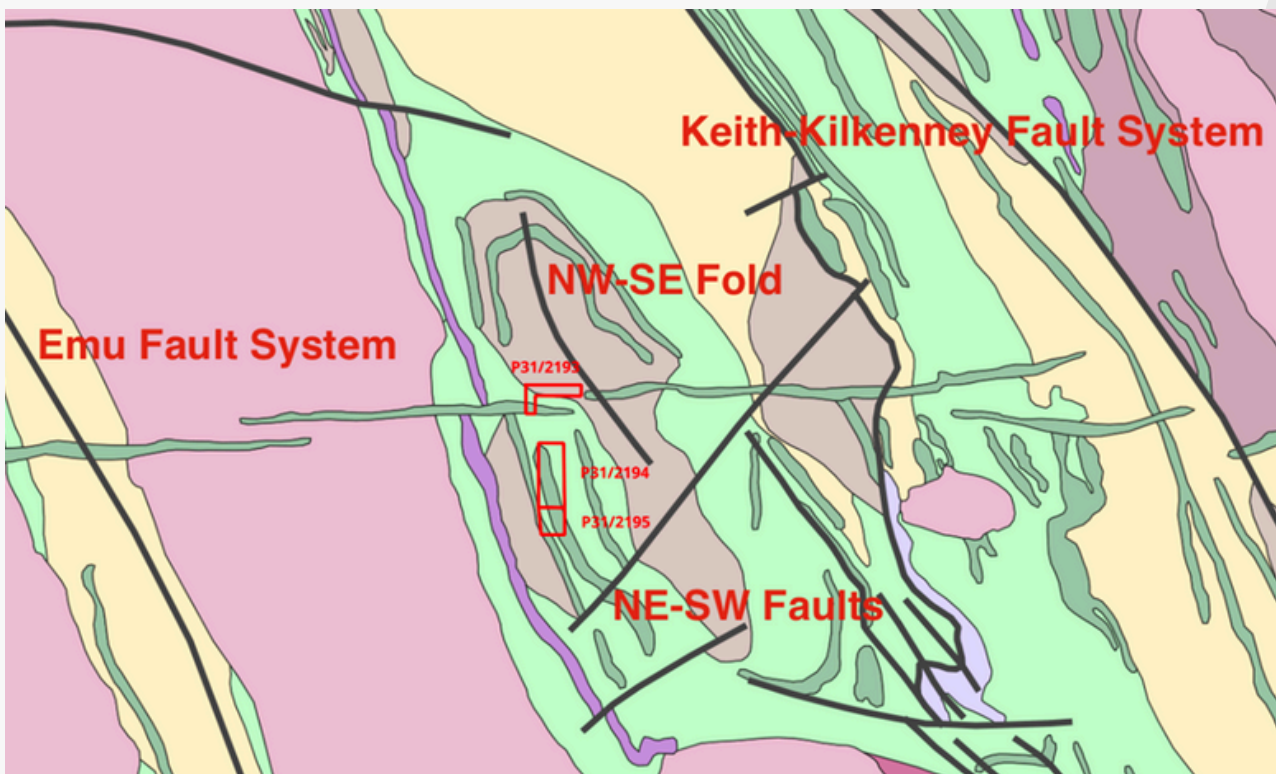


**Figure 13** - Recent grab sampling of tenement with Au g/t (orange) draped over geology and historic workings (pickaxes)

# High Potential (Au) Structural Targets

With the most common style of gold mineralisation within the Yilgarn Terrane being through orogenic-driven hydrothermal veining, structural features such as folds, faults and shears remain key indicators in prospectivity for rare-metal mineralisation. Across the tenement a series of structures on a 1:500,000 scale have been mapped. None of these structures are completely tested for mineralisation and some remain completely untested. It is also worth noting, smaller (non 1:100k scale) faults generally form perpendicular to larger faults, as it becomes the weakest planes as the main fault displaces bedrock.

The project lies a minimum of 16kms in-between the two major structural features/ hydrothermal fluid pathways within the Menangina Domain, with the NNW-SSE striking Emu Fault system 12km to the west and the Keith-Kilkenny Fault system 16kms to the east (NE-SE striking). Closer to the project, there are a series of dominant NE-SW striking faults mapped as close as 2.2km east of the project. The largest of those faults is mapped to be around 15km long and have a dextral offset of ~300m.



**Figure 15** - GSWA 1:500k Structural Trends of the Region

The project also has a large synclinal fold feature approximately 250m NE from the eastern boundary. This fold is striking NW-SE and extends approximately 9km along strike of the axial trace. The close proximity of this large fold to the tenement area shows great potential for parasitic folds to be present across the project (smaller perpendicular off-set features).

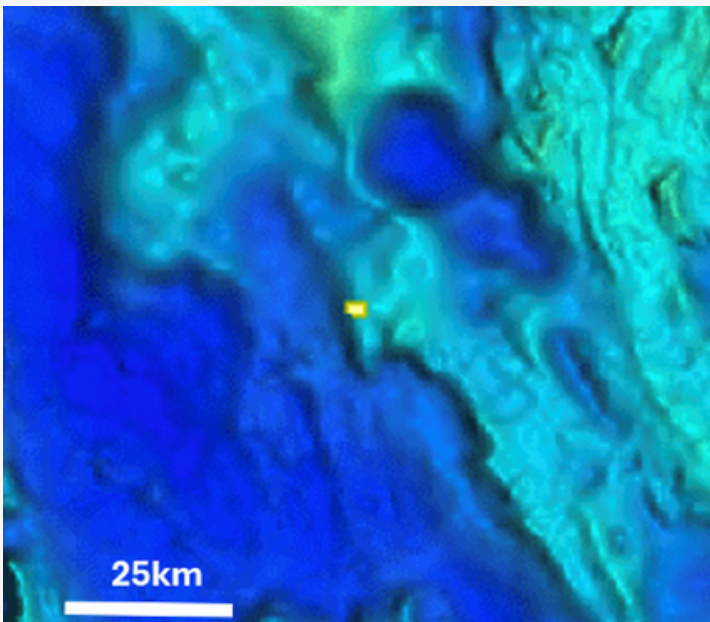
From visual confirmation of structural related quartz veining within the project (precipitated hydrothermal fluids). It is strongly plausible the following fluid migration pathway is what's responsible for the introduction of gold-mineralisation within the project. With mineralised-hydrothermal fluids initially being driven from the earth's mantle through the more predominant Emu and Kilkenny Fault Systems, before passing through the aforementioned smaller faults/folds closer to the project before finally settling within the even smaller parasitic features across the project, acting as "mineralisation traps" with the fluids having no-where further to traverse.



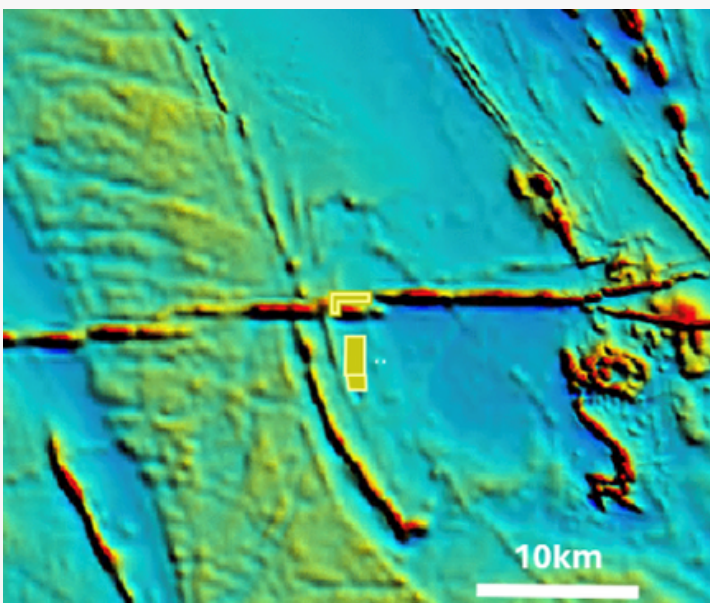
# GSWA Geophysics Interpretation

GSWA gravity and magnetic data have been reviewed across the tenement area, with both datasets draped over the project boundaries to assist in regional interpretation.

Regional geophysical data show tenements P31/2193–95 positioned along a prominent east–west magnetic corridor coinciding with a linear, high-density gravity ridge. Magnetic imagery highlights a well-defined, laterally continuous dolerite dyke system striking east–west across moderately magnetic greenstone sequences. These dykes display strong, linear magnetic highs associated with magnetite-bearing mafic intrusions, providing clear structural contrast against the surrounding lower-magnetic mafic extrusive and sedimentary rocks. The dyke corridor is interpreted as a major structural conduit intruded along pre-existing crustal weaknesses within the Kurnalpi Terrane.



Gravity data show the tenements situated along the northern margin of a regional gravity low, bounded to the south by a gravity high corresponding to dense mafic–ultramafic volcanic and intrusive units, and to the north by lower-density granitic and felsic lithologies. This contrast reflects a greenstone–granite contact zone, a geological setting known to localise hydrothermal fluid flow and concentrate mineralisation. The dolerite dyke system, cutting across this gravity gradient, likely exploited deep-seated fault zones that provided vertical fluid pathways during orogenic deformation. Collectively, the gravity and magnetic signatures define a favourable structural corridor prospective for shear-hosted and intrusion-related gold mineralisation.



**Figure 14** - Interpreted GSWA Gravity (top), Magnetics (bottom) of the tenement

# Associated Data/ Maps to be Provided on Confirmation of Project Sale

At the confirmation/ completion of the tenement sale the following maps/ data will be provided to assist the project holder in generating exploration targets, generating prospecting targets and for WAMEX annual technical reports.

- Geological maps
- Surface sampling maps
- Drillhole sections
- GSWA Gravity and Magnetics maps of project
- A collection of previous WAMEX reports for portions of the tenement
- Drillhole Collar spreadsheet
- Drillhole Assay spreadsheet
- Surface Sampling spreadsheet
- Field grab sampling data



# Executive Summary

The project, containing tenements P 31/2193, P 31/2194, and P 31/2195 are three pending prospecting licences covering approximately 312 hectares of highly prospective ground within the Menangina Domain of the Archean Yilgarn Craton, Western Australian Eastern Goldfields. The tenements are located ~630 km ENE of Perth, ~145 km NE of Kalgoorlie, ~35 km SE of Kookynie, and 2 km west of Yerilla Station, positioned within a region with a long history of gold mineralisation and historic production since 1895.

The project area is underlain by interbedded mafic intrusive, extrusive and metasedimentary units representing paleo-seafloor sequences, intruded by regional granitic intrusions and crosscut by dolerite intrusions. Multiple faults/ folds are within close proximity of the project, providing significant potential for orogenic gold mineralisation. Greenstone lithologies are exposed at surface as rocky hills and gullies, trending N-S to NNW-SSE, with minimal soil cover, facilitating access to both primary and alluvial-style gold deposits.

Historic and modern exploration has included 528 surface samples (max 12.95 g/t Au) and 24 drillholes totalling 668 m (peak intercept 1 m @ 1.08 g/t Au), alongside detailed mapping of multiple historic workings including the “Black Gin” and “Queen of the Earth (north)” shaft systems. Field assessments have confirmed anomalous gold-bearing structures within both recorded and unrecorded workings, highlighting zones with potential mineralised strikes of 50–80 m. Regional geophysical data indicate the tenements are positioned along an east-west dolerite dyke corridor within a greenstone-granite contact, forming a favourable structural setting for structurally-hosted and intrusion-related gold mineralisation.

With minimal drilling coverage, strong structural control, and confirmed historic production, the project represents an exceptional opportunity for further exploration and near-term target generation within a proven gold-producing region.

This report was completed for  
*Complete Prospecting by Golden Strike.*

**Reporting Geologist - -**  
Kim Foster  
BscGeology (Mining),  
AAUSIMM



All information in the above report is general in nature, and produced with publicly available data on the mentioned tenement and area.. Golden Strike Pty Ltd advises any party conduct their own research prior to any investment decisions.